



KITLOCKER.COM

# FOOTBALL TEAM CATALOGUE 2021

United Kingdom - English

# MOVE TO ZERO

Helping protect the future of sport for all athletes\*

Move to Zero is Nike's journey toward zero carbon and zero waste to help protect the future of sport. We exist to serve athletes everywhere and that's why we're on a mission to help ensure a healthy planet. For us, there is no finish line. Niketeamfootball.com will now display a sunburst logo next to products made with sustainable materials. Look for this logo to find products made with at least 50% sustainable materials by weight, exclusive of trims.

Sustainable materials include recycled polyester or organic cotton. Recycled polyester reduces carbon emissions and waste. Organic cotton is grown without synthetic fertilizers and with less water than conventional cotton.

For more information on Nike Sustainability please visit [nike.com/sustainability](https://nike.com/sustainability) or [purpose.nike.com](https://purpose.nike.com).

# CONTENTS

Matchday .....	4
Training .....	70
Lifestyle .....	140
Equipment .....	162





**MATCHDAY**





Sustainable materials

## NEW VaporKnit III Jersey

RRP £54.95

### Lifecycle

January 2021 - December 2022

Futures only

### Available in

S - M - L - XL - 2XL


CW3101-010  
Black / Black /  
Black / (White)

CW3101-100  
White / White /  
White / (Black)

CW3101-463  
Royal Blue /  
Royal Blue /  
Obsidian /  
(White)

CW3101-657  
University Red /  
Bright Crimson /  
Bright Crimson /  
(White)

### Product Features

- This product is made with 100% recycled polyester fibers.
- Nike VaporKnit technology combines lightweight cooling, reduced cling and precision fit.
- Quick-drying, open-hole fabric helps you stay cool in high-heat zones.
- Stretchy, slim cut fits close to the body so it stays out of your way.
- Slim fit for a tailored feel.



## **NEW** Strike II Jersey S/S

RRP £31.95

### Lifecycle

January 2021 - December 2022

### Available in

S - M - L - XL - 2XL



CW3544-010  
Black / Black /  
(White)



CW3544-011  
Black / Volt /  
(White)



CW3544-100  
White / White /  
(Black)



CW3544-410  
Midnight Navy /  
Photo Blue /  
(White)



CW3544-463  
Royal Blue /  
Obsidian /  
(White)



CW3544-657  
University Red /  
Bright Crimson /  
(White)

### Product Features

- This product is made with at least 75% recycled polyester fibers.
- Dri-FIT technology helps you stay dry and comfortable.
- Mesh on the back and sides provides additional breathability.
- Side panels are shaped like a lightning bolt for a fast look.
- Slim fit for a tailored feel.

# LIFECYCLE ENDS DEC 2022





 Sustainable materials

## **NEW** Strike II Jersey S/S (Youth)

RRP £22.95

### Lifecycle

January 2021 - December 2022

### Available in

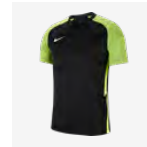
XS - S - M - L  
XL

RRP £22.95

RRP £26.95



CW3557-010  
Black / Black /  
(White)



CW3557-011  
Black / Volt /  
(White)



CW3557-100  
White / White /  
(Black)



CW3557-410  
Midnight Navy /  
Photo Blue /  
(White)



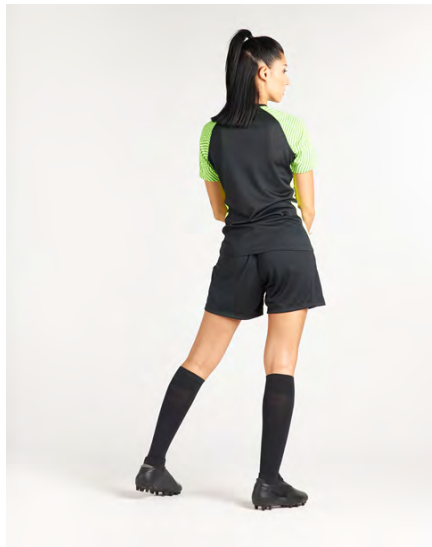
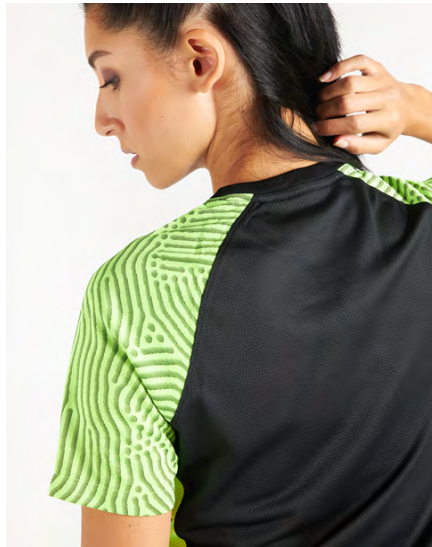
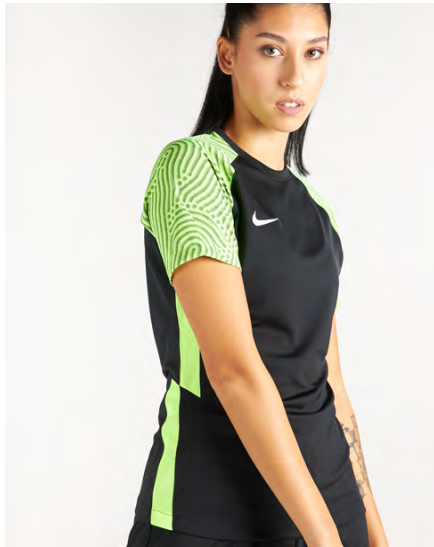
CW3557-463  
Royal Blue /  
Obsidian /  
(White)



CW3557-657  
University Red /  
Bright Crimson /  
(White)

### Product Features

- This product is made with at least 75% recycled polyester fibers.
- Dri-FIT technology helps you stay dry and comfortable.
- Mesh on the back and sides provides additional breathability.
- Side panels are shaped like a lightning bolt for a fast look.
- Standard fit for a relaxed, easy feel.



## **NEW** Women's Strike II Jersey S/S

RRP £31.95

### Lifecycle

January 2021 - December 2022

### Available in

XS - S - M - L - XL



CW3553-010  
Black / Black /  
(White)



CW3553-011  
Black / Volt /  
(White)



CW3553-100  
White / White /  
(Black)



CW3553-410  
Midnight Navy /  
Photo Blue /  
(White)



CW3553-463  
Royal Blue /  
Obsidian /  
(White)



CW3553-657  
University Red /  
Bright Crimson /  
(White)

### Product Features

- This product is made with at least 75% recycled polyester fibers.
- Dri-FIT technology helps you stay dry and comfortable.
- Mesh on the back and sides provides additional breathability.
- Side panels are shaped like a lightning bolt for a fast look.
- Standard fit for a relaxed, easy feel.

# LIFECYCLE ENDS DEC 2022





## Challenge III Jersey S/S

RRP £31.95

### Lifecycle

January 2020 - December 2021

### Available in

S - M - L - XL - 2XL



BV6703-010  
Black / (White)



BV6703-100  
White / (Black)



BV6703-302  
Pine Green /  
(White)



BV6703-463  
Royal Blue /  
(White)



BV6703-657  
University Red /  
(White)

### Product Features

- 100% Polyester.
- Dri-FIT technology helps keep you dry and comfortable.
- Slim fit for a tailored feel.
- Ribbed collar and cuffs deliver a retro look and feel.



## Challenge III Jersey S/S (Youth)

RRP £22.95

### Lifecycle

January 2020 - December 2021

### Available in

XS - S - M - L  
XL

RRP £22.95

RRP £26.95



BV6738-010  
Black / Black /  
(White)



BV6738-100  
White / White /  
(Black)



BV6738-302  
Pine Green /  
Pine Green /  
(White)



BV6738-463  
Royal Blue /  
Royal Blue /  
(White)



BV6738-657  
University Red /  
University Red /  
(White)

### Product Features

- 100% Polyester.
- Dri-FIT technology helps keep you dry and comfortable.
- Slim fit for a tailored feel.
- Ribbed collar and cuffs deliver a retro look and feel.







**NEW** Striped Division IV Jersey  
S/S

RRP £21.95

**Lifecycle**

January 2021 - December 2023

**Available in**

S - M - L - XL - 2XL



CW3813-060  
Anthracite /  
Black / (White)



CW3813-100  
White / Black /  
(Black)



CW3813-102  
White / Royal  
Blue / (Black)



CW3813-103  
White /  
University Blue /  
(Black)



CW3813-104  
White /  
University Red /  
(Black)



CW3813-302  
Pine Green /  
Black / (White)



CW3813-463  
Royal Blue /  
Black / (White)



CW3813-658  
University Red /  
Black / (White)



CW3813-719  
Tour Yellow /  
Black / (White)

**Product Features**

- This product is made with 100% recycled polyester fibers.
- Nike Dri-FIT technology moves sweat from your skin for quicker evaporation—helping you stay dry and comfortable.
- Lightweight mesh on the back adds breathability.
- Slim fit for a tailored feel.

**LIFECYCLE ENDS DEC 2023**



Sustainable materials



## Striped Division IV Jersey S/S (Youth)

RRP £16.95

### Lifecycle

January 2021 - December 2023

### Available in

XS - S - M - L  
XL

RRP £16.95

RRP £19.95



CW3819-060  
Anthracite /  
Black / (White)



CW3819-100  
White / Black /  
(Black)



CW3819-102  
White / Royal  
Blue / (Black)



CW3819-103  
White /  
University Blue /  
(Black)



CW3819-104  
White /  
University Red /  
(Black)



CW3819-302  
Pine Green /  
Black / (White)



CW3819-463  
Royal Blue /  
Black / (White)



CW3819-658  
University Red /  
Black / (White)



CW3819-719  
Tour Yellow /  
Black / (White)

### Product Features

- This product is made with 100% recycled polyester fibers.
- Nike Dri-FIT technology moves sweat from your skin for quicker evaporation—helping you stay dry and comfortable.
- Lightweight mesh on the back adds breathability.
- Standard fit for a relaxed, easy feel.





## **NEW** Women's Striped Division IV Jersey S/S

RRP £21.95

### Lifecycle

January 2021 - December 2023

### Available in

XS - S - M - L - XL



CW3816-060  
Anthracite /  
Black / (White)



CW3816-100  
White / Black /  
(Black)



CW3816-102  
White / Royal  
Blue / (Black)



CW3816-103  
White /  
University Blue /  
(Black)



CW3816-104  
White /  
University Red /  
(Black)



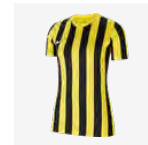
CW3816-302  
Pine Green /  
Black / (White)



CW3816-463  
Royal Blue /  
Black / (White)



CW3816-658  
University Red /  
Black / (White)



CW3816-719  
Tour Yellow /  
Black / (White)

### Product Features

- This product is made with 100% recycled polyester fibers.
- Nike Dri-FIT technology moves sweat from your skin for quicker evaporation—helping you stay dry and comfortable.
- Lightweight mesh on the back adds breathability.
- Standard fit for a relaxed, easy feel.

# LIFECYCLE ENDS DEC 2023



## Trophy IV Jersey S/S

RRP £19.95

### Lifecycle

January 2020 - December 2022

### Available in

S - M - L - XL - 2XL



BV6725-010  
Black / White /  
(White)



BV6725-053  
Pewter Grey /  
Bright Crimson /  
(Black)



BV6725-100  
White / Black /  
(Black)



BV6725-303  
Pine Green /  
Gorge Green /  
(White)



BV6725-354  
Hyper Turq / Volt  
/ (Black)



BV6725-410  
Midnight Navy /  
Photo Blue /  
(White)



BV6725-412  
University Blue /  
Midnight Navy /  
(White)



BV6725-463  
Royal Blue /  
Midnight Navy /  
(White)



BV6725-657  
University Red /  
Team Red /  
(White)



BV6725-719  
Tour Yellow /  
University Gold /  
(Black)



BV6725-819  
Safety Orange /  
Team Orange /  
(Black)

### Product Features

- This product is made with at least 50% recycled polyester fibers.
- Dri-FIT technology helps keep you dry and comfortable.
- Mesh side stripes and back panel add breathability.
- Slim fit for a tailored feel.

**LIFECYCLE ENDS DEC 2022**



 Sustainable materials

## Trophy IV Jersey S/S (Youth)

RRP £14.95

### Lifecycle

January 2020 - December 2022

### Available in

XS - S - M - L  
XL

RRP £14.95

RRP £16.95



BV6749-010  
Black / White /  
(White)



BV6749-052  
Pewter Grey /  
Bright Crimson /  
(Black)



BV6749-100  
White / Black /  
(Black)



BV6749-302  
Pine Green /  
Gorge Green /  
(White)



BV6749-354  
Hyper Turq / Volt  
/ (Black)



BV6749-410  
Midnight Navy /  
Photo Blue /  
(White)



BV6749-412  
University Blue /  
Midnight Navy /  
(White)



BV6749-483  
Royal Blue /  
Midnight Navy /  
(White)



BV6749-657  
University Red /  
Team Red /  
(White)



BV6749-719  
Tour Yellow /  
University Gold /  
(Black)



BV6749-819  
Safety Orange /  
Team Orange /  
(Black)

### Product Features

- This product is made with at least 50% recycled polyester fibers.
- Dri-FIT technology helps keep you dry and comfortable.
- Mesh side stripes and back panel add breathability.
- Slim fit for a tailored feel.



## Tiempo Premier Jersey L/S

RRP £18.95

### Lifecycle

January 2018 - December 2021

### Available in

S - M - L - XL - 2XL



894248-010  
Black / White /  
(White)



894248-057  
Pewter Grey /  
Black / (Black)



894248-100  
White / Black /  
(Black)



894248-302  
Pine Green /  
White / (White)



894248-410  
Midnight Navy /  
University Red /  
(White)



894248-411  
Midnight Navy /  
White / (White)



894248-412  
University Blue /  
White / (White)



894248-463  
Royal Blue /  
White / (White)



894248-464  
Royal Blue /  
University Gold /  
(White)



894248-657  
University Red /  
White / (White)



894248-662  
Vivid Pink /  
Black / (Black)



894248-739  
University Gold /  
Black / (Black)



894248-815  
Safety Orange /  
Black / (Black)

### Product Features

- 100% Polyester.
- Nike Dry fabric helps you stay dry and comfortable.
- Front panel graphic is embossed for subtle style.
- Mesh back panel provides additional breathability.
- Ribbed v-neck collar provides a versatile fit.

**IN FINAL YEAR**





## Tiempo Premier Jersey L/S (Youth)

RRP £14.95

### Lifecycle

January 2018 - December 2021

### Available in

XS - S - M - L  
XL

RRP £14.95

RRP £16.95


894113-010  
Black / White /  
(White)

894113-057  
Pewter Grey /  
Black / (Black)

894113-100  
White / Black /  
(Black)

894113-302  
Pine Green /  
White / (White)

894113-410  
Midnight Navy /  
University Red /  
(White)

894113-411  
Midnight Navy /  
White / (White)

894113-412  
University Blue /  
White / (White)

894113-463  
Royal Blue /  
White / (White)

894113-464  
Royal Blue /  
University Gold /  
(White)

894113-657  
University Red /  
White / (White)

894113-662  
Vivid Pink /  
Black / (Black)

894113-739  
University Gold /  
Black / (Black)

894113-815  
Safety Orange /  
Black / (Black)

### Product Features

- 100% Polyester.
- Dri-FIT technology helps you stay dry and comfortable.
- Front panel graphic is embossed for subtle style.

# IN FINAL YEAR



## Tiempo Premier Jersey S/S

RRP £16.95

### Lifecycle

January 2018 - December 2021

### Available in

S - M - L - XL - 2XL



894230-010  
Black / White /  
(White)



894230-057  
Pewter Grey /  
Black / (Black)



894230-100  
White / Black /  
(Black)



894230-302  
Pine Green /  
White / (White)



894230-410  
Midnight Navy /  
University Red /  
(White)



894230-411  
Midnight Navy /  
White / (White)



894230-412  
University Blue /  
White / (White)



894230-463  
Royal Blue /  
White / (White)



894230-464  
Royal Blue /  
University Gold /  
(White)



894230-657  
University Red /  
White / (White)



894230-662  
Vivid Pink /  
Black / (Black)



894230-739  
University Gold /  
Black / (Black)



894230-815  
Safety Orange /  
Black / (Black)

### Product Features

- 100% Polyester.
- Dri-FIT technology helps you stay dry and comfortable.
- Front panel graphic is embossed for subtle style.
- Mesh back panel provides additional breathability.
- Ribbed v-neck collar provides a versatile fit.

**IN FINAL YEAR**



## Tiempo Premier Jersey S/S (Youth)

RRP £12.95

### Lifecycle

January 2018 - December 2021

### Available in

XS - S - M - L  
XL

RRP £12.95

RRP £14.95



894111-010  
Black / White /  
(White)



894111-057  
Pewter Grey /  
Black / (Black)



894111-100  
White / Black /  
(Black)



894111-302  
Pine Green /  
White / (White)



894111-410  
Midnight Navy /  
University Red /  
(White)



894111-411  
Midnight Navy /  
White / (White)



894111-412  
University Blue /  
White / (White)



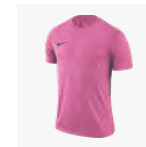
894111-463  
Royal Blue /  
White / (White)



894111-464  
Royal Blue /  
University Gold /  
(White)



894111-657  
University Red /  
White / (White)



894111-662  
Vivid Pink /  
Black / (Black)



894111-739  
University Gold /  
Black / (Black)



894111-815  
Safety Orange /  
Black / (Black)

### Product Features

- 100% Polyester.
- Dri-FIT technology helps you stay dry and comfortable.
- Front panel graphic is embossed for subtle style.

# IN FINAL YEAR



## Legend Jersey S/S

RRP £19.95

### Lifecycle

January 2019 - December 2021

### Available in

S - M - L - XL - 2XL



AJ0998-010  
Black / White /  
White / (White)



AJ0998-100  
White / Black /  
Black / (Black)



AJ0998-101  
White /  
University Red /  
Black / (Black)



AJ0998-102  
White / Royal  
Blue / Black /  
(Black)



AJ0998-302  
Pine Green /  
Action Green /  
Action Green /  
(White)



AJ0998-410  
Midnight Navy /  
White / White /  
(White)



AJ0998-411  
Midnight Navy /  
Royal Blue /  
Royal Blue /  
(White)



AJ0998-463  
Royal Blue /  
White / White /  
(White)



AJ0998-657  
University Red /  
White / White /  
(White)



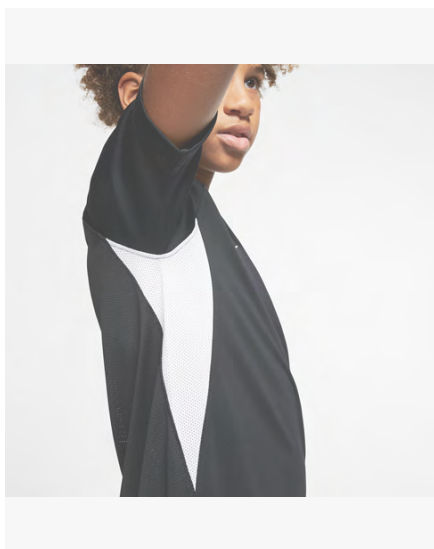
AJ0998-739  
University Gold /  
Black / Black /  
(Black)

### Product Features

- This product is made with at least 75% recycled polyester fibers.
- Dri-FIT technology helps you stay dry, comfortable and focused.
- Mesh underarm and shoulder insets add breathability.
- Hybrid v-neck collar has taped seams for a smooth feel.
- Swoosh design trademark is embroidered on the right chest.







## Legend Jersey S/S (Youth)

RRP £14.95

### Lifecycle

January 2019 - December 2021

### Available in

XS - S - M - L  
XL

RRP £14.95

RRP £16.95



AJ1010-010  
Black / White /  
Black / (White)



AJ1010-100  
White / Black /  
White / (Black)



AJ1010-101  
White /  
University Red /  
University Red /  
(Black)



AJ1010-102  
White / Royal  
Blue / Royal Blue  
/ (White)



AJ1010-302  
Pine Green /  
White / White /  
(White)



AJ1010-410  
Midnight Navy /  
White / White /  
(White)



AJ1010-411  
Midnight Navy /  
Royal Blue /  
Royal Blue /  
(White)



AJ1010-463  
Royal Blue /  
White / White /  
(White)



AJ1010-657  
University Red /  
White / White /  
(White)



AJ1010-739  
University Gold /  
Black / Black /  
(Black)

### Product Features

- This product is made with at least 75% recycled polyester fibers.
- Dri-FIT technology helps you stay dry, comfortable and focused.
- Mesh underarm and shoulder insets add breathability.
- Hybrid v-neck collar has taped seams for a smooth feel.
- Swoosh design trademark is embroidered on the right chest.



## Park VII Jersey L/S

RRP £15.95

### Lifecycle

January 2020 - December 2023

### Available in

S - M - L - XL - 2XL


BV6706-010  
Black / (White)

BV6706-100  
White / (Black)

BV6706-302  
Pine Green /  
(White)

BV6706-410  
Midnight Navy /  
(White)

BV6706-412  
University Blue /  
(White)

BV6706-463  
Royal Blue /  
(White)

BV6706-657  
University Red /  
(White)

BV6706-677  
Team Red /  
(White)

BV6706-702  
Volt / (Black)

BV6706-719  
Tour Yellow /  
(Black)

BV6706-819  
Safety Orange /  
(Black)

### Product Features

- This product is made with at least 75% recycled polyester fibers.
- Dri-FIT technology helps keep you dry and comfortable.
- Mesh back panel adds breathability.
- Slim fit for a tailored feel.



Sustainable materials

## Park VII Jersey L/S (Youth)

RRP £11.95

### Lifecycle

January 2020 - December 2023

### Available in

XS - S - M - L  
XL

RRP £11.95

RRP £13.95



BV6740-010  
Black / (White)



BV6740-100  
White / (Black)



BV6740-302  
Pine Green /  
(White)



BV6740-410  
Midnight Navy /  
(White)



BV6740-412  
University Blue /  
(White)



BV6740-463  
Royal Blue /  
(White)



BV6740-657  
University Red /  
(White)



BV6740-677  
Team Red /  
(White)



BV6740-702  
Volt / (Black)



BV6740-719  
Tour Yellow /  
(Black)



BV6740-819  
Safety Orange /  
(Black)

### Product Features

- This product is made with 100% recycled polyester fibers.
- Dri-FIT technology helps keep you dry and comfortable.
- Mesh back panel adds breathability.
- Slim fit for a tailored feel.



 Sustainable materials

## Park Derby III Jersey S/S

RRP £17.95

### Lifecycle

January 2021 - December 2023

### Available in

S - M - L - XL - 2XL



CW3826-010  
Black / Jersey  
Gold / (White)



CW3826-303  
Pine Green /  
Tour Yellow /  
(White)



CW3826-410  
Midnight Navy /  
Tour Yellow /  
(White)



CW3826-464  
Royal Blue /  
University Red /  
(White)



CW3826-547  
Court Purple /  
White / (White)



CW3826-658  
University Red /  
Midnight Navy /  
(White)



CW3826-677  
Team Red /  
University Blue /  
(White)



CW3826-720  
Tour Yellow /  
Royal Blue /  
(White)

### Product Features

- This product is made with 100% recycled polyester fibers.
- Dri-FIT technology helps you stay dry and comfortable.
- V-neck collar is taped for a smooth feel against the skin.
- Mesh on the back and sides provides additional breathability.
- Slim fit for a tailored feel.

# LIFECYCLE ENDS DEC 2023





Sustainable materials



## Park Derby III Jersey S/S (Youth)

RRP £13.95

### Lifecycle

January 2021 - December 2023

### Available in

XS - S - M - L  
XL

RRP £13.95

RRP £15.95



CW3833-010  
Black / Jersey  
Gold / (White)



CW3833-303  
Pine Green /  
Tour Yellow /  
(White)



CW3833-410  
Midnight Navy /  
Tour Yellow /  
(White)



CW3833-464  
Royal Blue /  
University Red /  
(White)



CW3833-547  
Court Purple /  
White / (White)



CW3833-658  
University Red /  
Midnight Navy /  
(White)



CW3833-677  
Team Red /  
University Blue /  
(White)



CW3833-720  
Tour Yellow /  
Royal Blue /  
(White)

### Product Features

- This product is made with 100% recycled polyester fibers.
- Dri-FIT technology helps you stay dry and comfortable.
- V-neck collar is taped for a smooth feel against the skin.
- Mesh on the back and sides provides additional breathability.
- Standard fit for a relaxed, easy feel.



Sustainable materials

## Park VII Jersey S/S

RRP £14.95

### Lifecycle

January 2020 - December 2023

### Available in

S - M - L - XL - 2XL


BV6708-010  
Black / (White)

BV6708-100  
White / (Black)

BV6708-302  
Pine Green /  
(White)

BV6708-354  
Hyper Turq /  
(Black)

BV6708-410  
Midnight Navy /  
(White)

BV6708-412  
University Blue /  
(White)

BV6708-463  
Royal Blue /  
(White)

BV6708-547  
Court Purple /  
(White)

BV6708-635  
Bright Crimson /  
(Black)

BV6708-657  
University Red /  
(White)

BV6708-677  
Team Red /  
(White)

BV6708-702  
Volt / (Black)

BV6708-719  
Tour Yellow /  
(Black)

BV6708-729  
Jersey Gold /  
(Black)

BV6708-819  
Safety Orange /  
(Black)

### Product Features

- This product is made with at least 75% recycled polyester fibers.
- Dri-FIT technology helps keep you dry and comfortable.
- Mesh back panel adds breathability.
- Slim fit for a tailored feel.

# LIFECYCLE ENDS DEC 2023



## Park VII Jersey S/S (Youth)

RRP £10.95

### Lifecycle

January 2020 - December 2023

### Available in

XS - S - M - L  
XL

RRP £10.95

RRP £12.95



BV6741-010  
Black / (White)



BV6741-100  
White / (Black)



BV6741-302  
Pine Green /  
(White)



BV6741-354  
Hyper Turq /  
(Black)



BV6741-410  
Midnight Navy /  
(White)



BV6741-412  
University Blue /  
(White)



BV6741-463  
Royal Blue /  
(White)



BV6741-547  
Court Purple /  
(White)



BV6741-635  
Bright Crimson /  
(Black)



BV6741-657  
University Red /  
(White)



BV6741-677  
Team Red /  
(White)



BV6741-702  
Volt / (Black)



BV6741-719  
Tour Yellow /  
(Black)



BV6741-729  
Jersey Gold /  
(Black)



BV6741-819  
Safety Orange /  
(Black)

### Product Features

- This product is made with at least 75% recycled polyester fibers.
- Dri-FIT technology helps keep you dry and comfortable.
- Mesh back panel adds breathability.
- Slim fit for a tailored feel.

# LIFECYCLE ENDS DEC 2023



## Women's Park VII Jersey

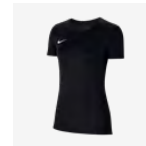
RRP £14.95

### Lifecycle

January 2020 - December 2023

### Available in

XS - S - M - L - XL



BV6728-010  
Black / (White)



BV6728-100  
White / (Black)



BV6728-341  
Pine Green /  
(White)



BV6728-354  
Hyper Turq /  
(Black)



BV6728-410  
Midnight Navy /  
(White)



BV6728-412  
University Blue /  
(White)



BV6728-463  
Royal Blue /  
(White)



BV6728-547  
Court Purple /  
(White)



BV6728-657  
University Red /  
(White)



BV6728-719  
Tour Yellow /  
(Black)

### Product Features

- This product is made with 100% recycled polyester fibers.
- Dri-FIT technology helps keep you dry and comfortable.
- Mesh on the back adds breathability.
- Slim fit for a tailored feel.

**LIFECYCLE ENDS DEC 2023**





## **NEW** VaporKnit III Short

RRP £44.95

### Lifecycle

January 2021 - December 2023

**Futures only**

### Available in

S - M - L - XL - 2XL


CW3847-010  
Black / Black /  
(White)

CW3847-100  
White / White /  
(Black)

CW3847-463  
Royal Blue /  
Obsidian /  
(White)

CW3847-657  
University Red /  
Bright Crimson /  
(White)

### Product Features

- This product is made with 100% recycled polyester fibers.
- Nike VaporKnit technology combines lightweight cooling, reduced cling and precision fit.
- Flyvent waistband combines elastic and mesh for a breathable, snug feel.
- Open-hole fabric in high-heat zones helps you stay cool when the game heats up.
- Slim fit for a tailored feel.



## **NEW** Venom III Woven Short

RRP £31.95

### Lifecycle

January 2021 - December 2023

### Available in

S - M - L - XL - 2XL



CW3855-010  
Black / White /  
(White)



CW3855-100  
White / Black /  
(Black)



CW3855-302  
Pine Green /  
White / (White)



CW3855-463  
Royal Blue /  
White / (White)



CW3855-657  
University Red /  
White / (White)

### Product Features

- Body: 85% Polyester/15% Spandex. Mesh: 100% Polyester.
- Dri-FIT technology helps you stay dry and comfortable.
- Mesh on the back and inner legs helps keep you cool when the game heats up.
- Elastic waistband and hidden drawcord provide a personalized fit.
- Standard fit for a relaxed, easy feel.



## Laser IV Woven Short

RRP £19.95

### Lifecycle

January 2019 - December 2021

### Available in

S - M - L - XL - 2XL



AJ1245-010  
Black / (White)



AJ1245-100  
White / (Black)



AJ1245-302  
Pine Green /  
(White)



AJ1245-410  
Midnight Navy /  
(White)



AJ1245-412  
University Blue /  
(White)



AJ1245-463  
Royal Blue /  
(White)



AJ1245-657  
University Red /  
(White)

### Product Features

- 100% Polyester.
- Dri-FIT technology helps you stay dry, comfortable and focused.
- 4-way stretch fabric moves with you on the pitch.
- Mesh side stripes add breathability.
- Elastic waistband with flat drawcord provides a personalized fit.
- Hem vents help you move freely.
- Swoosh design trademark is embroidered on the left leg.



## Laser IV Woven Short (Youth)

RRP £14.95

### Lifecycle

January 2019 - December 2021

### Available in

XS - S - M - L  
XL

RRP £14.95

RRP £16.95



AJ1261-010  
Black / (White)



AJ1261-100  
White / (Black)



AJ1261-302  
Pine Green /  
(White)



AJ1261-410  
Midnight Navy /  
(White)



AJ1261-412  
University Blue /  
(White)



AJ1261-463  
Royal Blue /  
(White)



AJ1261-657  
University Red /  
(White)

### Product Features

- 100% Polyester.
- Dri-FIT technology helps you stay dry, comfortable and focused.
- 4-way stretch fabric moves with you on the pitch.
- Mesh side stripes add breathability.
- Elastic waistband with flat drawcord provides a personalized fit.
- Hem vents help you move freely.
- Swoosh design trademark is embroidered on the left leg.





Sustainable materials

## **NEW** League II Knit Short

RRP £16.95

### Lifecycle

January 2021 - December 2022

### Available in

S - M - L - XL - 2XL


BV6852-010  
Black / White /  
White / (White)

BV6852-100  
White / Black /  
Black / (Black)

BV6852-302  
Pine Green /  
White / White /  
(White)

BV6852-329  
Green Spark /  
Black / (Black)

BV6852-410  
Midnight Navy /  
White / (White)

BV6852-463  
Royal Blue /  
White / White /  
(White)

BV6852-477  
Team Royal /  
White / (White)

BV6852-547  
Court Purple /  
White / White /  
(White)

BV6852-657  
University Red /  
White / White /  
(White)

BV6852-891  
Team Orange /  
Black / (Black)

### Product Features

- This product is made with 100% recycled polyester fibers.
- Dri-FIT technology helps you stay dry, comfortable & focused.
- Mesh stripes on the lower legs add breathability.
- Slim fit for a tailored feel.
- Elastic waistband and drawcord.



Sustainable materials

## League II Knit Short (Youth)

RRP £12.95

### Lifecycle

January 2020 - December 2022

### Available in

XS - S - M - L  
XL

RRP £12.95

RRP £14.95



BV6863-010  
Black / White /  
(White)



BV6863-100  
White / Black /  
(Black)



BV6863-302  
Pine Green /  
White / (White)



BV6863-329  
Green Spark /  
Black / (Black)



BV6863-410  
Midnight Navy /  
White / (White)



BV6863-463  
Royal Blue /  
White / (White)



BV6863-477  
Team Royal /  
White / (White)



BV6863-547  
Court Purple /  
White / (White)



BV6863-657  
University Red /  
White / (White)



BV6863-891  
Team Orange /  
Black / (Black)

### Product Features

- This product is made with 100% recycled polyester fibers.
- Dri-FIT technology helps you stay dry, comfortable and focused.
- Mesh stripes on the lower legs add breathability.
- Slim fit for a tailored feel.
- Elastic waistband and drawcord.



## **NEW** Park III Knit Short

RRP £11.95

### Lifecycle

January 2020 - December 2023

### Available in

S - M - L - XL - 2XL



BV6855-010  
Black / (White)



BV6855-017  
Pewter Grey /  
(Black)



BV6855-100  
White / (Black)



BV6855-302  
Pine Green /  
(White)



BV6855-354  
Hyper Turq /  
(Black)



BV6855-410  
Midnight Navy /  
(White)



BV6855-412  
University Blue /  
(White)



BV6855-463  
Royal Blue /  
(White)



BV6855-635  
Bright Crimson /  
(Black)



BV6855-657  
University Red /  
(White)



BV6855-677  
Team Red /  
(White)



BV6855-702  
Volt / (Black)



BV6855-719  
Tour Yellow /  
(Black)



BV6855-739  
University Gold /  
(Black)



BV6855-819  
Safety Orange /  
(Black)

### Product Features

- This product is made with 100% recycled polyester fibers.
- Dri-FIT technology helps you stay dry, comfortable and focused.
- Stretchy waistband is lined with mesh for breathability.
- Slim fit for a tailored feel.

# LIFECYCLE ENDS DEC 2023



## Park III Knit Short (Youth)

RRP £9.95

### Lifecycle

January 2020 - December 2023

### Available in

XS - S - M - L  
XL

RRP £9.95  
RRP £10.95



BV6865-010  
Black / (White)



BV6865-017  
Pewter Grey /  
(Black)



BV6865-100  
White / (Black)



BV6865-302  
Pine Green /  
(White)



BV6865-354  
Hyper Turq /  
(Black)



BV6865-410  
Midnight Navy /  
(White)



BV6865-412  
University Blue /  
(White)



BV6865-463  
Royal Blue /  
(White)



BV6865-635  
Bright Crimson /  
(Black)



BV6865-657  
University Red /  
(White)



BV6865-677  
Team Red /  
(White)



BV6865-702  
Volt / (Black)



BV6865-719  
Tour Yellow /  
(Black)



BV6865-739  
University Gold /  
(Black)



BV6865-819  
Safety Orange /  
(Black)

### Product Features

- This product is made with 100% recycled polyester fibers.
- Dri-FIT technology helps you stay dry, comfortable and focused.
- Stretchy waistband is lined with mesh for breathability.
- Slim fit for a tailored feel.

# LIFECYCLE ENDS DEC 2023





## Women's Park III Knit Short

RRP £11.95

### Lifecycle

January 2020 - December 2023

### Available in

XS - S - M - L - XL



BV6860-010  
Black / (White)



BV6860-100  
White / (Black)



BV6860-410  
Midnight Navy /  
(White)



BV6860-412  
University Blue /  
(White)



BV6860-463  
Royal Blue /  
(White)



BV6860-657  
University Red /  
(White)



BV6860-677  
Team Red /  
(White)



BV6860-719  
Tour Yellow /  
(Black)

### Product Features

- This product is made with 100% recycled polyester fibers.
- Dri-FIT technology helps you stay dry, comfortable and focused.
- Stretchy waistband is lined with mesh for breathability.
- Slim fit for a tailored feel.



## Park Little Kids Set

RRP £22.95

### Lifecycle

January 2020 - December 2023

### Available in

XS - S - M - L - XL



CD2244-010  
Black / Black /  
(White)



CD2244-100  
White / White /  
(Black)



CD2244-302  
Pine Green /  
Pine Green /  
(White)



CD2244-410  
Midnight Navy /  
Midnight Navy /  
(White)



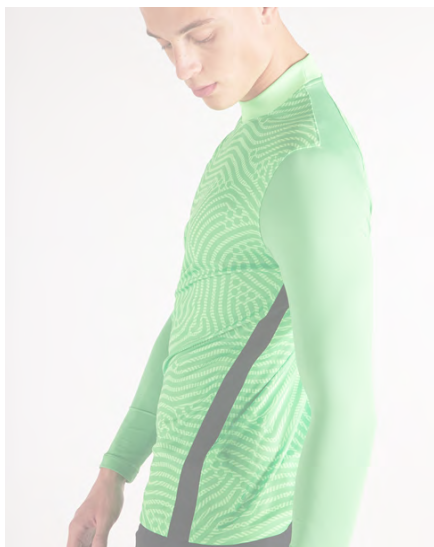
CD2244-463  
Royal Blue /  
Royal Blue /  
(White)



CD2244-657  
University Red /  
Unvred / (White)

### Product Features

- 100% Polyester.
- Dri-FIT technology helps keep you dry and comfortable.
- Mesh on the back of the jersey creates ventilation.
- Stretchy waistband on the shorts is lined with mesh for breathability.
- Standard fit for a relaxed, easy feel.



## Gardien III GK Jersey L/S

RRP £57.95

### Lifecycle

January 2020 - December 2021

### Available in

S - M - L - XL - 2XL



BV6711-398  
Green Spark /  
Light Green  
Spark / (Green  
Spark)



BV6711-406  
Team Royal /  
Blue Spark /  
(Team Royal)

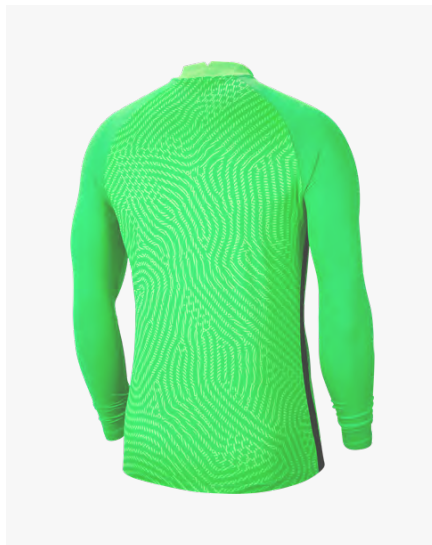


BV6711-803  
Team Orange /  
Brilliant Orange /  
(Team Orange)

### Product Features

- This product is made with at least 50% recycled polyester fibers.
- Dri-FIT technology helps keep you dry, comfortable and focused.
- Flexible fabric on the sleeves give you the freedom to make every save.
- Slim fit for a tailored feel.
- Flexible fabric on the sleeves.





 Sustainable materials

## Gardien III GK Jersey L/S (Youth)

RRP £45.95

### Lifecycle

January 2020 - December 2021

### Available in

XS - S - M - L  
XL

RRP £45.95

RRP £54.95



BV6743-398  
Green Spark /  
Light Green  
Spark / (Green  
Spark)



BV6743-477  
Team Royal /  
Blue Spark /  
(Team Royal)

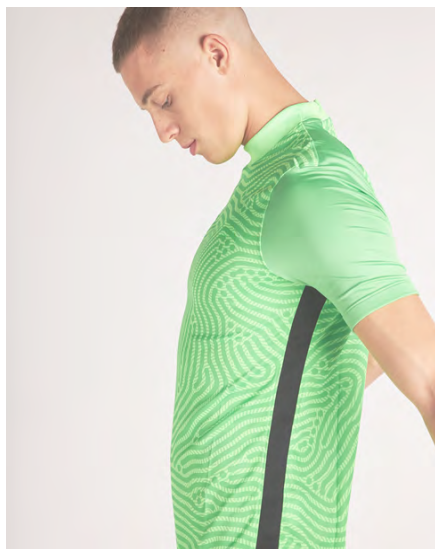


BV6743-891  
Team Orange /  
Brilliant Orange /  
(Team Orange)

### Product Features

- This product is made with 100% recycled polyester fibers.
- Dri-FIT technology helps keep you dry, comfortable and focused.
- Flexible fabric on the sleeves give you the freedom to make every save.
- Slim fit for a tailored feel.
- Flexible fabric on the sleeves.





## Goalkeeper Gardien III Jersey S/S

RRP £54.95

### Lifecycle

January 2020 - December 2021

### Available in

S - M - L - XL - 2XL


BV6714-398  
Green Strike /  
Light Green  
Spark / (Green  
Spark)

BV6714-477  
Team Royal /  
Blue Spark /  
(Team Royal)

BV6714-803  
Team Orange /  
Brilliant Orange /  
(Team Orange)

### Product Features

- This product is made with at least 50% recycled polyester fibers.
- Dri-FIT technology helps keep you dry, comfortable and focused.
- Flexible fabric on the sleeves give you the freedom to make every save.
- Slim fit for a tailored feel.



## Padded Goalkeeper Tight

RRP £49.95

### Lifecycle

April 2020 - December 2021

### Available in

S - M - L - XL - 2XL


CV0045-010  
Black / Black /  
(White)

### Product Features

- 80% Polyester/20% Spandex.
- Articulated padding on the hips provides flexible impact absorption.
- Dri-FIT technology helps keep you dry, comfortable and focused.



## Padded Goalkeeper Tight (Youth)

RRP £33.95

### Lifecycle

April 2020 - December 2021

### Available in

XS - S - M - L  
XL

RRP £33.95

RRP £39.95



CV0050-010  
Black / Black /  
(White)

### Product Features

- 80% Polyester/20% Spandex.
- Articulated padding on the hips provides impact absorption.
- Dri-FIT technology helps keep you dry, comfortable and focused.



## Padded Goalkeeper Short

RRP £39.95

### Lifecycle

April 2020 - December 2021

### Available in

S - M - L - XL - 2XL



CV0053-010  
Black / Black /  
(White)

### Product Features

- 80% Polyester/20% Spandex.
- Articulated padding on the hips provides flexible impact absorption.
- Dri-FIT technology helps keep you dry, comfortable and focused.





## Padded Goalkeeper Short (Youth)

RRP £29.95

### Lifecycle

January 2020 - December 2021

### Available in

XS - S - M - L  
XL

RRP £29.95

RRP £34.95


CV0057-010  
Black / Black /  
(White)

### Product Features

- 80% Polyester/20% Spandex.
- Articulated padding on the hips provides impact absorption.
- Dri-FIT technology helps keep you dry, comfortable and focused.



## Park IV GK Jersey L/S

RRP £31.95

### Lifecycle

January 2020 - December 2023

### Available in

S - M - L - XL - 2XL



CJ6066-010  
Black / White /  
(White)



CJ6066-052  
Pewter Grey /  
White / (Black)



CJ6066-463  
Royal Blue /  
White / (White)



CJ6066-702  
Volt / White /  
(Black)



CJ6066-819  
Safety Orange /  
White / (Black)

### Product Features

- 100% Polyester.
- Mesh across the back helps keep you cool when the game heats up.
- Dri-FIT technology helps keep you dry, comfortable and focused.
- Mesh across the back provides added breathability.
- Slim fit for a tailored feel.



## Park IV GK Jersey L/S (Youth)

RRP £22.95

### Lifecycle

January 2020 - December 2023

### Available in

XS - S - M - L  
XL

RRP £22.95

RRP £26.95



CJ6072-010  
Black / White /  
(White)



CJ6072-052  
Pewter Grey /  
White / (Black)



CJ6072-463  
Royal Blue /  
White / (White)



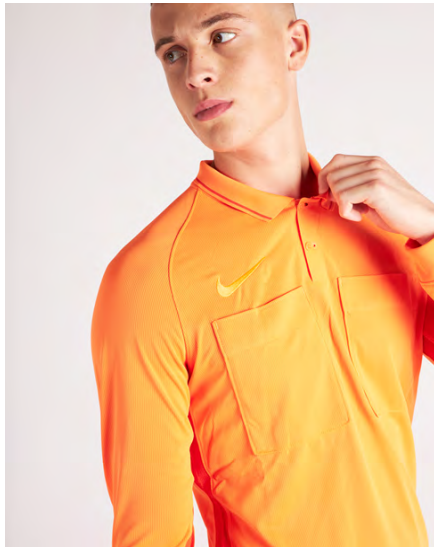
CJ6072-702  
Volt / White /  
(Black)



CJ6072-819  
Safety Orange /  
White / (Black)

### Product Features

- 100% Polyester.
- Mesh across the back helps keep you cool when the game heats up.
- Dri-FIT technology helps keep you dry, comfortable and focused.
- Mesh across the back provides added breathability.
- Slim fit for a tailored feel.



## Nike Dry Referee Top L/S

RRP £47.95

### Lifecycle

June 2018 - March 2022

### Available in

XS - S - M - L - XL - 2XL


AA0736-010  
Black /  
Anthracite /  
(Anthracite)

AA0736-060  
Anthracite / Dark  
Grey / (Dark  
Grey)

AA0736-354  
Hyper Turq /  
Green Glow /  
(Hyper Turq)

AA0736-551  
Vivid Purple /  
Bright Violet /  
(Vivid Purple)

AA0736-703  
Volt / Electric  
Green / (Volt)

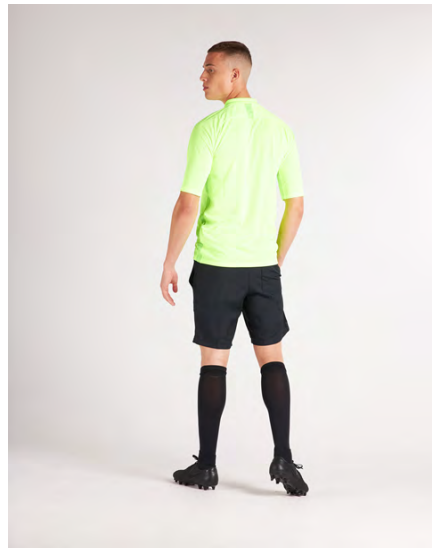
AA0736-819  
Safety Orange /  
Total Orange /  
(Safety Orange)

### Product Features

- This product is made with at least 75% recycled polyester fibers.
- Nike Dry fabric moves sweat from your skin for quicker evaporation—helping you stay dry, comfortable and focused.
- 2 large chest pockets secure storage with interior strap closures.
- Raglan sleeves eliminate shoulder seams to let your arms move naturally.
- Color-tipping along the collar adds a subtle contrast.

# LIFECYCLE ENDS MARCH 2022





## Nike Dry Referee Top S/S

RRP £42.95

### Lifecycle

June 2018 - March 2022

### Available in

XS - S - M - L - XL - 2XL


AA0735-010  
Black /  
Anthracite /  
(Anthracite)

AA0735-060  
Anthracite / Dark  
Grey / (Dark  
Grey)

AA0735-354  
Hyper Turq /  
Green Glow /  
(Hyper Turq)

AA0735-551  
Vivid Purple /  
Bright Violet /  
(Vivid Purple)

AA0735-703  
Volt / Electric  
Green / (Volt)

AA0735-819  
Safety Orange /  
Total Orange /  
(Safety Orange)

### Product Features

- This product is made with at least 75% recycled polyester fibers.
- Nike Dry fabric moves sweat from your skin for quicker evaporation—helping you stay dry, comfortable and focused.
- 2 large chest pockets secure storage with interior strap closures.
- Raglan sleeves allow for a natural range of motion.
- Color-tipping along the collar adds a subtle contrast.



Sustainable materials



## Nike Dry Referee Short

RRP £31.95

### Lifecycle

June 2018 - March 2022

### Available in

XS - S - M - L - XL - 2XL


AA0737-010  
Black / Black /  
(Anthracite)

### Product Features

- This product is made with at least 50% recycled polyester fibers.
- Nike Vaporknit technology combines lightweight cooling, reduced cling and precision fit.
- Quick-drying, high-stretch yarn provides flexible comfort.
- Precision fit conforms to your body for a streamlined feel.



Sustainable materials



## Matchfit Sock

RRP £12.95

### Lifecycle

January 2020 - December 2021

### Available in

XS: UK 12-2 - S: UK 2-5 - M: UK 5.5-7.5  
- L: UK 8-11 - XL: UK 11-14.5



CV1956-010  
Black /  
Anthracite /  
(White)



CV1956-100  
White / White /  
(Black)



CV1956-302  
Pine Green /  
Gorge Green /  
(White)



CV1956-329  
Green Spark /  
(Black)



CV1956-354  
Hyper Turq /  
Hyper Turq /  
(Black)



CV1956-412  
University Blue /  
Italy Blue /  
(Midnight Navy)



CV1956-463  
Royal Blue /  
Midnight Navy /  
(White)



CV1956-477  
Team Royal /  
(White)



CV1956-635  
Bright Crimson /  
Bright Crimson /  
(Black)



CV1956-657  
University Red /  
Gym Red /  
(White)



CV1956-719  
Tour Yellow /  
University Gold /  
(Black)



CV1956-891  
Team Orange /  
(Black)

### Product Features

- 92% Polyester/5% Cotton/3% Spandex.
- Dri-FIT technology helps keep feet dry and comfortable.
- Cushioning in high-wear areas adds durability and helps absorb impact.
- Dynamic arch provides a supportive fit and feel.
- Anatomically correct left/right design for a natural fit.



## Classic Sock II

RRP £5.95

### Lifecycle

January 2017 - December 2021

### Available in

XS: UK 12-2 - S: UK 2-5 - M: UK 5.5-7.5  
- L: UK 8-11 - XL: UK 11-14.5

SX5728-010  
Black / (White)

SX5728-057  
Pewter Grey /  
(Black) / (Black)

SX5728-100  
White / (Black)

SX5728-101  
White / (Royal  
Blue)

SX5728-302  
Pine Green /  
(White)

SX5728-411  
Midnight Navy /  
(White)

SX5728-412  
University Blue /  
(White)

SX5728-463  
Royal Blue /  
(White)

SX5728-545  
Court Purple /  
(White)

SX5728-648  
University Red /  
(White)

SX5728-670  
Team Red /  
(White)

SX5728-702  
Volt / (Black)

SX5728-719  
Tour Yellow /  
(Black)

SX5728-739  
University Gold /  
(Black)

SX5728-816  
Safety Orange /  
(Black)

### Product Features

- 97% Nylon/3% Spandex.
- Dri-FIT technology helps keep feet dry and comfortable.
- Cushioning in high-wear areas helps absorb impact.
- Dynamic arch provides a supportive fit and feel.
- Anatomical left and right socks are designed for a natural fit.





## Nike Squad Leg Sleeve

RRP £6.95

### Lifecycle

April 2020 - December 2021

### Available in

S/M: UK 2-7.5 - L/XL: UK 8-14.5



SK0033-010  
Black / (White)



SK0033-100  
White / (Black)



SK0033-410  
Midnight Navy /  
(White)



SK0033-463  
Royal Blue /  
(White)



SK0033-657  
University Red /  
(White)

### Product Features

- 95% Polyester/5% Spandex.
- Sweat-wicking design helps your feet stay dry and comfortable.
- Secure fit helps keep your shin guards in place.
- Mesh fabric adds ventilation.



## Nike Matchfit Sleeve

RRP £8.95

### Lifecycle

January 2021 - December 2022

### Available in

S/M: UK 2-7.5 - L/XL: UK 8-14.5



CU6419-010  
Black / (White)



CU6419-100  
White / (Black)



CU6419-401  
Royal Blue /  
(White)



CU6419-410  
Midnight Navy /  
(White)



CU6419-657  
University Red /  
(White)

### Product Features

- 95% polyester/5% spandex.
- Sweat-wicking fabric helps keep you dry and comfortable.
- Ribbed design stretches for a secure fit.
- Comes in a pair.



Sustainable materials

## Park First Layer

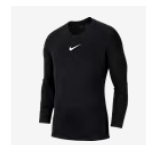
RRP £17.95

### Lifecycle

January 2019 - December 2023

### Available in

S - M - L - XL - 2XL



AV2609-010  
Black / (White)



AV2609-057  
Pewter Grey /  
(White)



AV2609-100  
White / (Cool  
Grey)



AV2609-302  
Pine Green /  
(White)



AV2609-410  
Midnight Navy /  
(White)



AV2609-412  
University Blue /  
(White)



AV2609-463  
Royal Blue /  
(White)



AV2609-547  
Court Purple /  
(White)



AV2609-635  
Bright Crimson /  
(Black)



AV2609-657  
University Red /  
(White)



AV2609-702  
Volt / (Black)



AV2609-719  
Tour Yellow /  
(Black)



AV2609-819  
Safety Orange /  
(White)

### Product Features

- This product is made with 100% recycled polyester fibers.
- Dri-FIT technology helps you stay dry, comfortable and focused.
- Stretchy fabric with a smooth face provides a low-friction underlayer.
- Invisible thumb loops stay hidden when not in use.
- Tight fit gives a streamlined look and feel.
- Raglan sleeves eliminate the shoulder seam to help you move freely.
- Swoosh design trademark is heat transferred on the center of the chest.

# LIFECYCLE ENDS DEC 2023



Sustainable materials

## Park First Layer (Youth)

RRP £12.95

### Lifecycle

January 2019 - December 2023

### Available in

XS - S - M - L  
XL

RRP £12.95

RRP £14.95



AV2611-010  
Black / (White)



AV2611-057  
Pewter Grey /  
(White)



AV2611-100  
White / (Cool  
Grey)



AV2611-302  
Pine Green /  
(White)



AV2611-410  
Midnight Navy /  
(White)



AV2611-412  
University Blue /  
(White)



AV2611-463  
Royal Blue /  
(White)



AV2611-547  
Court Purple /  
(White)



AV2611-657  
University Red /  
(White)



AV2611-702  
Volt / (Black)



AV2611-719  
Tour Yellow /  
(Black)



AV2611-819  
Safety Orange /  
(White)

### Product Features

- This product is made with 100% recycled polyester fibers.
- Dri-FIT technology helps you stay dry, comfortable and focused.
- Stretchy fabric with a smooth face provides a low-friction underlayer.
- Invisible thumb loops stay hidden when not in use.
- Tight fit gives a streamlined look and feel.
- Raglan sleeves eliminate the shoulder seam to help you move freely.
- Swoosh design trademark is heat transferred on the center of the chest.





## Men's Nike Pro Tight Fit Long-Sleeve Top

RRP £31.95

### Lifecycle

October 2019 - June 2021

### Available in

S - M - L - XL - 2XL


BV5588-010  
Black / (White)

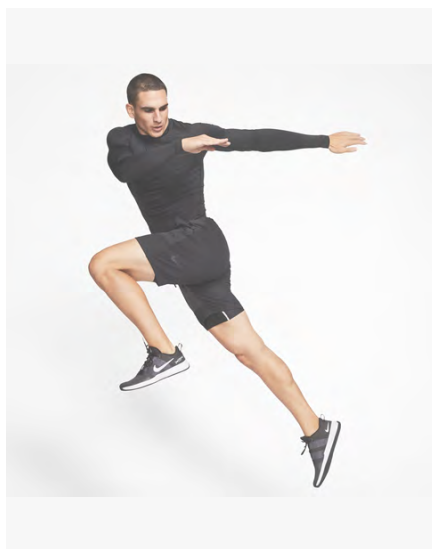
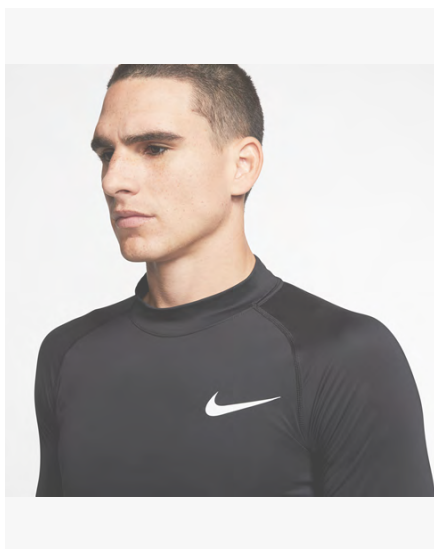
BV5588-068  
Smoke Grey /  
Light Smoke  
Grey / (Black)

BV5588-100  
White / (Black)

BV5588-480  
Game Royal /  
(Black)

### Product Features

- Body: 91-93% Polyester/7-9% Spandex. Panels: 92% Polyester/8% Spandex.
- Nike Pro fabric with sweat-wicking technology helps you feel locked in and cool.
- Lightweight, stretchy fabric lets you move comfortably.
- Tight fit for a body-hugging feel.



## Men's Nike Pro Long-Sleeve Top

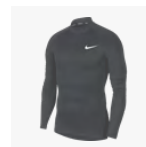
RRP £31.95

### Lifecycle

October 2019 - June 2021

### Available in

S - M - L - XL - 2XL


BV5592-010  
Black / (White)

### Product Features

- Fabric: Body: 91% Polyester/9% Spandex. Panels: 92% Polyester/8% Spandex.
- Nike Pro fabric with sweat-wicking technology helps you feel locked in and cool.
- Lightweight, stretchy fabric lets you move comfortably.
- Tight fit for a body-hugging feel.



## Men's Nike Pro Tight

RRP £31.95

### Lifecycle

October 2019 - June 2021

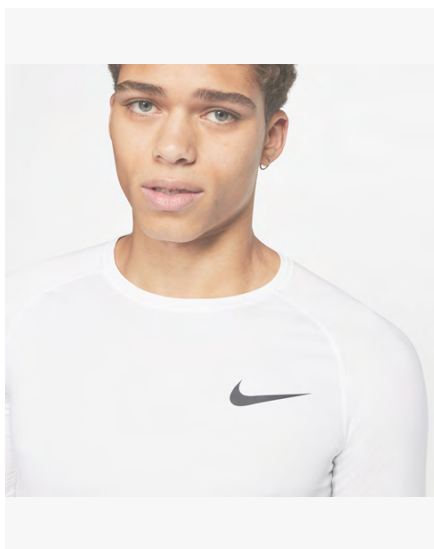
### Available in

S - M - L - XL - 2XL


BV5641-010  
Black / (White)

### Product Features

- Body: 91-93% Polyester/7-9% Spandex. Panels: 92% Polyester/8% Spandex.
- Nike Pro fabric with sweat-wicking technology helps you feel locked in and cool.
- Lightweight, stretchy fabric lets you move comfortably.
- Tight fit for a body-hugging feel.



## Men's Nike Pro Tight Fit Short-Sleeve Top

RRP £26.95

### Lifecycle

October 2019 - June 2021

### Available in

S - M - L - XL - 2XL



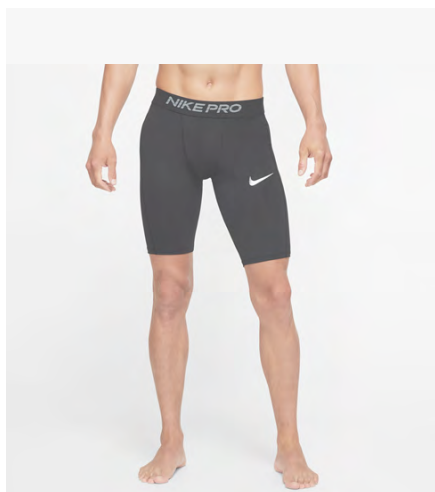
BV5631-010  
Black / (White)



BV5631-100  
White / (Black)

### Product Features

- Body: 91-93% Polyester/7-9% Spandex. Panels: 92% Polyester/8% Spandex.
- Nike Pro fabric with sweat-wicking technology helps you feel locked in and cool.
- Stretchy, lightweight fabric lets you move comfortably.
- Tight fit for a body-hugging feel.



## Men's Nike Pro Short Long

RRP £22.95

### Lifecycle

October 2019 - June 2021

### Available in

S - M - L - XL - 2XL

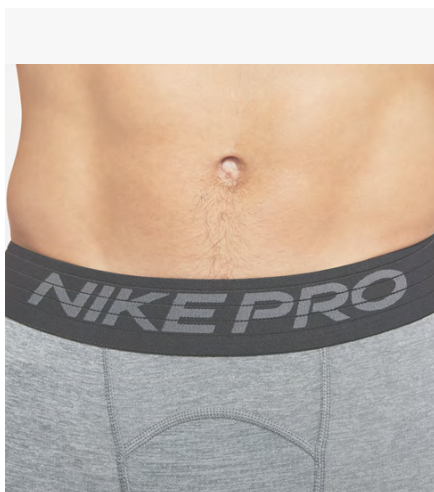


BV5637-010  
Black / (White)

### Product Features

- Body: 90-93% Polyester/7-10% Spandex. Mesh: 92% Polyester/8% Spandex. Elastic: 46% Nylon/43% Recycled Polyester/11% Spandex.
- Nike Pro fabric provides a sweat-wicking layer of support to help you feel locked in and cool when the action heats up.
- The snug elastic waistband is updated to be slightly higher and thicker for more support and is vented for breathability.
- Tight fit for a body-hugging feel.
- Double-layer mesh pouch for breathability.





## Men's Nike Pro Short

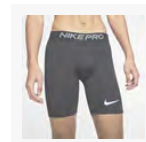
RRP £22.95

### Lifecycle

October 2019 - June 2021

### Available in

S - M - L - XL - 2XL



BV5635-010  
Black / (White)



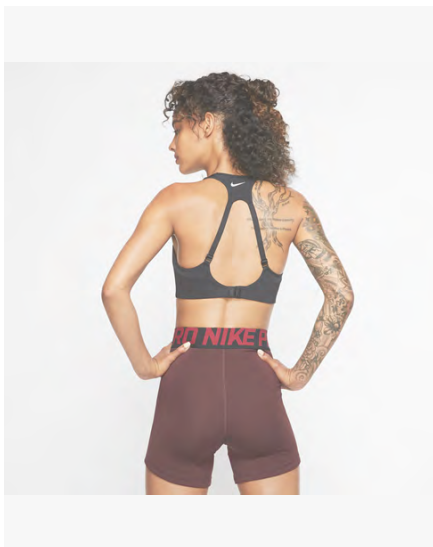
BV5635-085  
Smoke Grey /  
Light Smoke  
Grey / (Black)



BV5635-100  
White / (Black)

### Product Features

- Body: 90-93% Polyester/7-10% Spandex. Mesh: 92% Polyester/8% Spandex. Elastic: 46% Nylon/43% Recycled Polyester/11% Spandex.
- Nike Pro fabric provides a sweat-wicking base layer of support to help you feel locked in and cool when the action heats up.
- Stretchy fabric with a tight feel allows you to move naturally.
- The snug elastic waistband is updated to be slightly higher and thicker for more support and is vented for breathability.
- Double-layered mesh pouch is breathable.
- Tight fit for a body-hugging feel.



## Women's Alpha High-Support Sports Bra

RRP £39.95

### Lifecycle

January 2020 - December 2021

### Available in

XS (A-C) - S (A-C) - S (D-E) - M (A-C) -  
M (D-E) - L (A-C) - L (D-E) - XL (D-E)


AJ0340-010  
Black / (White)

### Product Features

- Fabric: Body/back lining insets: 79% Nylon/21% Spandex. Mesh/mesh lining: 81% Nylon/19% Spandex. Pad: 100% Polyurethane. Pad back fabric: 100%
- Dri-FIT technology helps keep feet dry and comfortable.
- Cups help keep your natural shape.
- Perforations for breathability where you need it.
- Adjustable back clasp for easy on and off.
- Dri-FIT technology helps keep you dry and comfortable.
- Modified racerback design lets you move freely.



## Women's Nike Swoosh Medium-Support 1-Piece Pad

RRP £31.95

### Lifecycle

April 2020 - December 2024

### Available in

XS - S - M - L - XL - 2XL

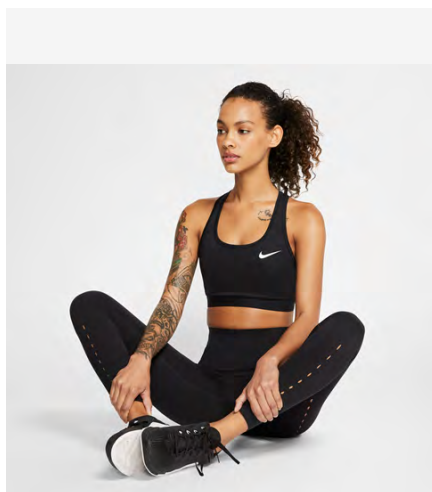
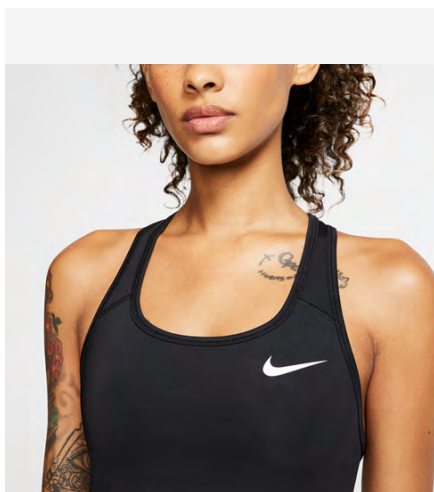
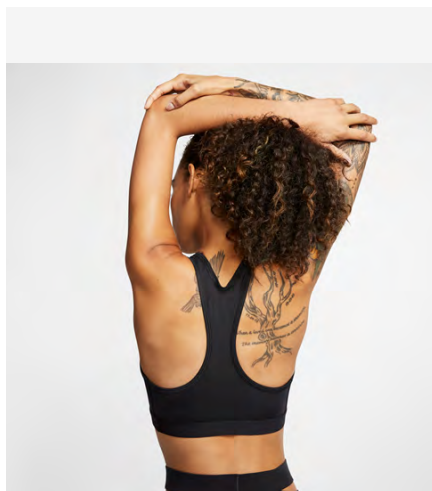
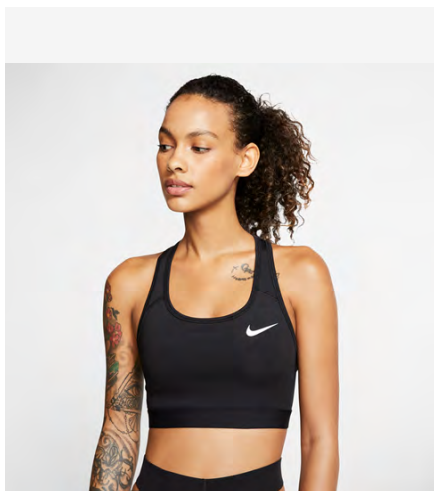


BV3636-010  
Black / (White)

### Product Features

- This product is made with at least 50% recycled polyester fibers.
- Nike Pro fabric provides a sweat-wicking base layer of support to help you feel locked in and cool when the action heats up.
- Stretchy fabric with a tight feel allows you to move naturally.
- The snug elastic waistband is updated to be slightly higher and thicker for more support and is vented for breathability.
- Double-layered mesh pouch is breathable.
- Tight fit for a body-hugging feel.

**LIFECYCLE ENDS DEC 2024**



## Women's Victory Swoosh Medium-Support Sports Bra

RRP £22.95

### Lifecycle

January 2020 - December 2024

### Available in

XS - S - M - L - XL - 2XL



BV3900-010  
White / Black /  
(Black)



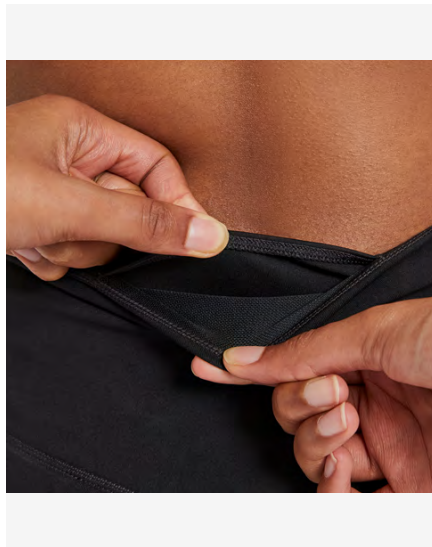
BV3900-100  
Black / Black /  
(White)

### Product Features

- This product is made with at least 75% recycled polyester fibers.
- Dri-FIT technology helps keep feet dry and comfortable.
- Exposed elastic band resists slipping so it stays in place.
- Tight fit for a body-hugging feel.
- Non padded.

**LIFECYCLE ENDS DEC 2024**





## **NEW** Women's Tights

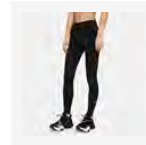
RRP £34.95

### Lifecycle

January 2021 - December 2022

### Available in

XS - S - M - L - XL - 2XL


DD0252-010  
Black / (White)

### Product Features

- This product is made with at least 50% recycled polyester fibers.
- Stretchy fabric with Dri-FIT technology moves sweat from your skin for quicker evaporation to help you stay dry and comfortable.
- Soft fabric stays opaque to help keep you confidently covered, whether you're reaching for groceries or bending into a squat. The sides are seamless and the
- The design includes 2 hidden pockets in the mid-rise waistband to keep you ready for whatever you tackle in a day. The pocket at the back is big enough to
- Tight fit for a body-hugging feel.
- Full length.

**LIFECYCLE ENDS DEC 2022**





## **NEW** Women's 365 Tight

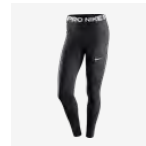
RRP £34.95

### **Lifecycle**

January 2021 - December 2022

### **Available in**

S - M - L - XL - 2XL


CZ9779-010  
Black / (White)

### **Product Features**

- This product is made with at least 50% recycled polyester fibers.
- Nike Dri-FIT technology helps you stay dry, comfortable and focused.
- A wide, smooth mid-rise waistband feels supportive around your core.
- Ventilated mesh panels along the back of the lower legs create airflow for breathability.
- Tight fit for a body-hugging feel.
- Mid rise.

# **LIFECYCLE ENDS DEC 2022**



## **NEW** Women's 365 Short

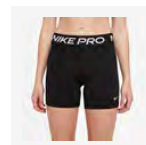
RRP £22.95

### Lifecycle

January 2021 - December 2022

### Available in

XS - S - M - L - XL - 2XL


CZ9831-010  
Black / (White)

### Product Features

- This product is made with at least 50% recycled polyester fibers.
- Stretchy fabric with Dri-FIT technology helps keep you feeling dry, comfortable and supported.
- The mid-rise design has a wide elastic waistband that wraps your core in supportive comfort.
- The curved seam at the back and seams placed toward the back highlight your natural lines while reducing distractions.
- Tight fit for a body-hugging feel.
- Inseam: 5".





# TRAINING



 Sustainable materials

## Academy 21 Training Top

RRP £16.95

### Lifecycle

January 2021 - December 2022

### Available in

XS - S - M - L - XL - 2XL



CW6101-014  
Black / White /  
Anthracite /  
(White)



CW6101-100  
White / Black /  
Black / (Black)



CW6101-362  
Light Green  
Spark / White /  
Pine Green /  
(White)



CW6101-453  
Obsidian / White  
/ Royal Blue /  
(White)



CW6101-463  
Royal Blue /  
White / Obsidian  
/ (White)



CW6101-657  
University Red /  
White / Gym Red  
/ (White)



CW6101-677  
Team Red /  
White / Jersey  
Gold / (White)



CW6101-719  
Tour Yellow /  
Black /  
Anthracite /  
(Black)

### Product Features

- This product is made with 100% recycled polyester fibers.
- Dri-FIT technology helps keep you dry and comfortable.
- Knit fabric is smooth, lightweight and doesn't cling to your body.
- Mesh panels on the back and sides help you stay cool.
- Standard fit for a relaxed, easy feel.

# LIFECYCLE ENDS DEC 2022





Sustainable materials

## **NEW** Academy 21 Training Top (Youth)

RRP £10.95

### Lifecycle

January 2021 - December 2022

### Available in

XS - S - M - L  
XL

RRP £10.95

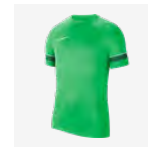
RRP £12.95



CW6103-014  
Black / White /  
Anthracite /  
(White)



CW6103-100  
White / Black /  
Black / (Black)



CW6103-362  
Light Green  
Spark / White /  
Pine Green /  
(White)



CW6103-453  
Obsidian / White  
/ Royal Blue /  
(White)



CW6103-463  
Royal Blue /  
White / Obsidian  
/ (White)



CW6103-657  
University Red /  
White / Gym Red  
/ (White)



CW6103-677  
Team Red /  
White / Jersey  
Gold / (White)



CW6103-719  
Tour Yellow /  
Black /  
Anthracite /  
(Black)

### Product Features

- This product is made with 100% recycled polyester fibers.
- Dri-FIT technology helps keep you dry and comfortable.
- Mesh on the back and sleeves allow airflow so you stay cool.
- Standard fit for a relaxed, easy feel.





 Sustainable materials

## Academy 21 Polo

RRP £26.95

### Lifecycle

January 2021 - December 2022

### Available in

S - M - L - XL - 2XL



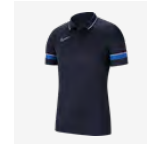
CW6104-014  
Black / White /  
Anthracite /  
(White)



CW6104-100  
White / Black /  
Black / (Black)



CW6104-362  
Light Green  
Spark / White /  
Pine Green /  
(White)



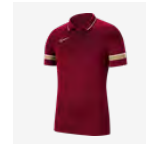
CW6104-453  
Obsidian / White  
/ Royal Blue /  
(White)



CW6104-463  
Royal Blue /  
White / Obsidian  
/ (White)



CW6104-657  
University Red /  
White / Gym Red  
/ (White)



CW6104-677  
Team Red /  
White / Jersey  
Gold / (White)



CW6104-719  
Tour Yellow /  
Black /  
Anthracite /  
(Black)

### Product Features

- This product is made with 100% recycled polyester fibers.
- Nike Dri-FIT technology helps keep you dry and comfortable.
- Fold-over collar and 2-button placket create a classic look.
- Standard fit for a relaxed, easy feel.

**LIFECYCLE ENDS DEC 2022**



Sustainable materials

## **NEW** Academy 21 Polo (Youth)

RRP £20.95

### Lifecycle

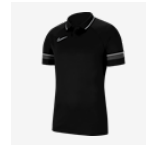
January 2021 - December 2022

### Available in

XS - S - M - L  
XL

RRP £20.95

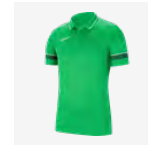
RRP £23.95



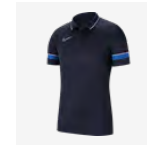
CW6106-014  
Black / White /  
Anthracite /  
(White)



CW6106-100  
White / Black /  
Black / (Black)



CW6106-362  
Light Green  
Spark / White /  
Pine Green /  
(White)



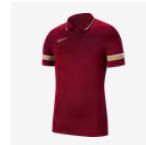
CW6106-453  
Obsidian / White  
/ Royal Blue /  
(White)



CW6106-463  
Royal Blue /  
White / Obsidian  
/ (White)



CW6106-657  
University Red /  
White / Gym Red  
/ (White)



CW6106-677  
Team Red /  
White / Jersey  
Gold / (White)



CW6106-719  
Tour Yellow /  
Black /  
Anthracite /  
(Black)

### Product Features

- This product is made with 100% recycled polyester fibers.
- Nike Dri-FIT technology helps keep you dry and comfortable.
- Fold-over collar and 2-button placket create a classic look.
- Standard fit for a relaxed, easy feel.



## **NEW** Academy 21 Drill Top

RRP £32.95

### Lifecycle

January 2021 - December 2022

### Available in

XS - S - M - L - XL - 2XL



CW6110-014  
Black / White /  
Anthracite /  
(White)



CW6110-100  
White / Black /  
Black / (Black)



CW6110-362  
Light Green  
Spark / White /  
Pine Green /  
(White)



CW6110-453  
Obsidian / White  
/ Royal Blue /  
(White)



CW6110-463  
Royal Blue /  
White / Obsidian  
/ (White)



CW6110-657  
University Red /  
White / Gym Red  
/ (White)



CW6110-677  
Team Red /  
White / Jersey  
Gold / (White)



CW6110-719  
Tour Yellow /  
Black /  
Anthracite /  
(Black)

### Product Features

- This product is made with 100% recycled polyester fibers.
- Dri-FIT technology moves sweat from your skin for quicker evaporation—helping you stay dry and comfortable.
- Lightweight fabric stretches with you, while thumbholes help keep your sleeves in place.
- 1/4-length zipper lets you adjust your ventilation when things heat up.
- Standard fit for a relaxed, easy feel.

# LIFECYCLE ENDS DEC 2022



**Sustainable materials**



## Academy 21 Drill Top (Youth)

RRP £25.95

### Lifecycle

January 2021 - December 2022

### Available in

XS - S - M - L  
XL

RRP £25.95

RRP £29.95



CW6112-014  
Black / White /  
Anthracite /  
(White)



CW6112-100  
White / Black /  
Black / (Black)



CW6112-362  
Light Green  
Spark / White /  
Pine Green /  
(White)



CW6112-453  
Obsidian / White  
/ Royal Blue /  
(White)



CW6112-463  
Royal Blue /  
White / Obsidian  
/ (White)



CW6112-657  
University Red /  
White / Gym Red  
/ (White)



CW6112-677  
Team Red /  
White / Jersey  
Gold / (White)



CW6112-719  
Tour Yellow /  
Black /  
Anthracite /  
(Black)

### Product Features

- This product is made with 100% recycled polyester fibers.
- Dri-FIT technology moves sweat from your skin for quicker evaporation—helping you stay dry and comfortable.
- Lightweight fabric stretches with you, while thumbholes help keep your sleeves in place.
- 1/4-length zipper lets you adjust your ventilation when things heat up.
- Standard fit for a relaxed, easy feel.



## NEW Academy 21 Knit Track Jacket

RRP £34.95

### Lifecycle

January 2021 - December 2022

### Available in

S - M - L - XL - 2XL



CW6113-014  
Black / White /  
Anthracite /  
(White)



CW6113-100  
White / Black /  
Black / (Black)



CW6113-362  
Light Green  
Spark / White /  
Pine Green /  
(White)



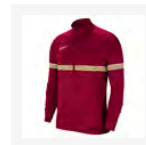
CW6113-453  
Obsidian / White  
/ Royal Blue /  
(White)



CW6113-463  
Royal Blue /  
White / Obsidian  
/ (White)



CW6113-657  
University Red /  
White / Gym Red  
/ (White)



CW6113-677  
Team Red /  
White / Jersey  
Gold / (White)



CW6113-719  
Tour Yellow /  
Black /  
Anthracite /  
(Black)

### Product Features

- This product is made with at least 75% recycled polyester fibers.
- Dri-FIT technology helps keep you dry and comfortable.
- Knit fabric feels soft, warm and slightly stretchy.
- Mesh panels across the chest help keep you cool.
- Standard fit for a relaxed, easy feel.
- Zippered pockets.

# LIFECYCLE ENDS DEC 2022





Sustainable materials

## **NEW** Academy 21 Knit Track Jacket (Youth)

RRP £26.95

### Lifecycle

January 2021 - December 2022

### Available in

XS - S - M - L  
XL

RRP £26.95

RRP £31.95



CW6115-014  
Black / White /  
Anthracite /  
(White)



CW6115-100  
White / Black /  
Black / (Black)



CW6115-362  
Light Green  
Spark / White /  
Pine Green /  
(White)



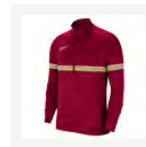
CW6115-453  
Obsidian / White  
/ Royal Blue /  
(White)



CW6115-463  
Royal Blue /  
White / Obsidian  
/ (White)



CW6115-657  
University Red /  
White / Gym Red  
/ (White)



CW6115-677  
Team Red /  
White / Jersey  
Gold / (White)



CW6115-719  
Tour Yellow /  
Black /  
Anthracite /  
(Black)

### Product Features

- This product is made with at least 75% recycled polyester fibers.
- Dri-FIT technology helps keep you dry and comfortable.
- Knit fabric feels soft, warm and slightly stretchy.
- Mesh panel across the chest adds breathability.
- Standard fit for a relaxed, easy feel.
- Zippered pockets.

# LIFECYCLE ENDS DEC 2022



**NEW** Academy 21 Woven Track Jacket

RRP £34.95

**Lifecycle**

January 2021 - December 2022

**Available in**

S - M - L - XL - 2XL


CW6118-014  
Black / White /  
Anthracite /  
(White)

CW6118-100  
White / Black /  
Black / (Black)

CW6118-362  
Light Green  
Spark / White /  
Pine Green /  
(White)

CW6118-453  
Obsidian / White  
/ Royal Blue /  
(White)

CW6118-463  
Royal Blue /  
White / Obsidian  
/ (White)

CW6118-657  
University Red /  
White / Gym Red  
/ (White)

CW6118-677  
Team Red /  
White / Jersey  
Gold / (White)

CW6118-719  
Tour Yellow /  
Black /  
Anthracite /  
(Black)

**Product Features**

- This product is made with 100% recycled polyester fibers.
- Dri-FIT technology helps keep you dry and comfortable.
- Taffeta fabric is light and durable.
- Mesh panel across the chest adds breathability.
- Standard fit for a relaxed, easy feel.
- Zippered pockets.

**LIFECYCLE ENDS DEC 2022**



Sustainable materials



## Academy 21 Woven Track Jacket (Youth)

RRP £26.95

### Lifecycle

January 2021 - December 2022

### Available in

XS - S - M - L  
XL

RRP £26.95

RRP £31.95



CW6121-014  
Black / White /  
Anthracite /  
(White)



CW6121-100  
White / Black /  
Black / (Black)



CW6121-362  
Light Green  
Spark / White /  
Pine Green /  
(White)



CW6121-453  
Obsidian / White  
/ Royal Blue /  
(White)



CW6121-463  
Royal Blue /  
White / Obsidian  
/ (White)



CW6121-657  
University Red /  
White / Gym Red  
/ (White)



CW6121-677  
Team Red /  
White / Jersey  
Gold / (White)



CW6121-719  
Tour Yellow /  
Black /  
Anthracite /  
(Black)

### Product Features

- This product is made with 100% recycled polyester fibers.
- Dri-FIT technology helps keep you dry and comfortable.
- Taffeta fabric is light and durable.
- Mesh panel across the chest adds breathability.
- Standard fit for a relaxed, easy feel.
- Zippered pockets.



## **NEW** Academy 21 Knit Short

RRP £16.95

### Lifecycle

January 2021 - December 2022

### Available in

XS - S - M - L - XL - 2XL



CW6107-010  
Black / White /  
White / (White)



CW6107-451  
Obsidian / White  
/ White / (White)

### Product Features

- This product is made with 100% recycled polyester fibers.
- Dri-FIT technology helps keep you dry and comfortable.
- Mesh stripes add breathability.
- Drawcord waistband gives you the perfect fit.
- Standard fit for a relaxed, easy feel.







Sustainable materials

## **NEW** Academy 21 Knit Short (Youth)

RRP £10.95

### Lifecycle

January 2021 - December 2022

### Available in

XS - S - M - L  
XL

RRP £10.95

RRP £12.95



CW6109-010  
Black / White /  
White / (White)



CW6109-451  
Obsidian / White  
/ White / (White)

### Product Features

- This product is made with 100% recycled polyester fibers.
- Nike Dri-FIT technology helps keep you dry and comfortable.
- Elastic waistband and drawcord give you a snug fit.
- Standard fit for a relaxed, easy feel.

# LIFECYCLE ENDS DEC 2022



## Academy 21 Knit Pant

RRP £30.95

### Lifecycle

January 2021 - December 2022

### Available in

XS - S - M - L - XL - 2XL



CW6122-010  
Black / White /  
White / (White)



CW6122-451  
Obsidian / White  
/ White / (White)

### Product Features

- This product is made with 100% recycled polyester fibers.
- Dri-FIT technology moves sweat from your skin for quicker evaporation—helping you stay dry and comfortable.
- The tapered design features zippered hems so you can change quickly over your shoes or cleats.
- An elastic waistband is lined with mesh for a breathable, snug feel.
- Standard fit for a relaxed, easy feel.
- Zippered pockets.

# LIFECYCLE ENDS DEC 2022



 Sustainable materials

**NEW** Academy 21 Knit Pant  
(Youth)

RRP £23.95

**Lifecycle**

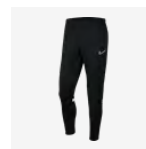
January 2021 - December 2022

**Available in**

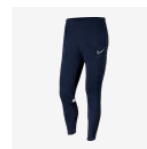
XS - S - M - L  
XL

RRP £23.95

RRP £27.95



CW6124-010  
Black / White /  
White / (White)



CW6124-451  
Obsidian / White  
/ White / (White)

**Product Features**

- This product is made with 100% recycled polyester fibers.
- Dri-FIT technology helps keep you dry and comfortable.
- Tapered legs help keep your feet clear when you're on the ball.
- Zippered hems let you change easily over cleats or shoes.
- Elastic waistband is lined with mesh for a snug, yet breathable fit.
- Mesh stripes behind the knees allow airflow.
- Standard fit for a relaxed, easy feel.
- Zippered pockets.



## **NEW** Academy 21 Woven Track Pant

RRP £34.95

### Lifecycle

January 2021 - December 2022

### Available in

XS - S - M - L - XL - 2XL



CW6128-010  
Black / White /  
White / (White)



CW6128-451  
Obsidian / White  
/ White / (White)

### Product Features

- This product is made with 100% recycled polyester fibers.
- Dri-FIT technology helps you stay dry and comfortable.
- Tapered legs keep your feet clear when you're on the ball.
- Zippered hems let you change easily over cleats or shoes.
- Elastic waistband gives you a secure fit.
- Standard fit for a relaxed, easy feel.
- Zippered pockets.

**LIFECYCLE ENDS DEC 2022**





 Sustainable materials

**NEW** Academy 21 Woven Track  
Pant (Youth)

RRP £26.95

**Lifecycle**

January 2021 - December 2022

**Available in**

XS - S - M - L  
XL

RRP £26.95

RRP £31.95



CW6130-010  
Black / White /  
White / (White)



CW6130-451  
Obsidian / White  
/ White / (White)

**Product Features**

- This product is made with 100% recycled polyester fibers.
- Dri-FIT technology helps you stay dry and comfortable.
- Tapered legs keep your feet clear when you're on the ball.
- Zippered hems let you change easily over cleats or shoes.
- Elastic waistband gives you a secure fit.
- Standard fit for a relaxed, easy feel.
- Zippered pockets.



## Academy 21 3/4 Knit Pant

RRP £26.95

### Lifecycle

January 2021 - December 2022

### Available in

S - M - L - XL - 2XL



CW6125-010  
Black / White /  
White / (White)



CW6125-451  
Obsidian / White  
/ White / (White)

### Product Features

- This product is made with 100% recycled polyester fibers.
- Dri-FIT technology helps you stay dry and comfortable.
- Shorter length keeps your feet clear when you're on the ball.
- Mesh on the lower back legs adds breathability.
- Elastic waistband and hidden drawcord create a secure fit.
- Standard fit for a relaxed, easy feel.
- Zippered pockets.





 Sustainable materials

**NEW** Academy 21 3/4 Knit Pant  
(Youth)

RRP £19.95

**Lifecycle**

January 2021 - December 2022

**Available in**

XS - S - M - L  
XL

RRP £19.95

RRP £22.95



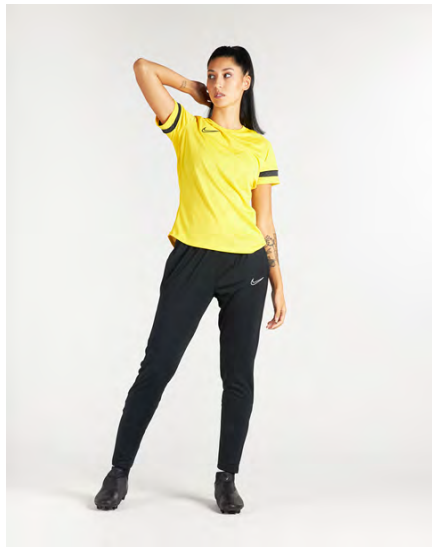
CW6127-010  
Black / White /  
White / (White)



CW6127-451  
Obsidian / White  
/ White / (White)

**Product Features**

- This product is made with 100% recycled polyester fibers.
- Dri-FIT technology helps you stay dry and comfortable.
- Shorter length keeps your feet clear when you're on the ball.
- Mesh on the lower back legs adds breathability.
- Elastic waistband and hidden drawcord create a secure fit.
- Standard fit for a relaxed, easy feel.
- Zippered pockets.



## NEW Women's Academy 21 Training Top

RRP £16.95

### Lifecycle

January 2021 - December 2022

### Available in

XS - S - M - L - XL



CV2627-014  
Black / White /  
Anthracite /  
(White)



CV2627-100  
White / Black /  
Black / (Black)



CV2627-362  
Light Green  
Spark / White /  
Pine Green /  
(White)



CV2627-453  
Obsidian / White  
/ Royal Blue /  
(White)



CV2627-463  
Royal Blue /  
White / Obsidian  
/ (White)



CV2627-657  
University Red /  
White / Gym Red  
/ (White)



CV2627-677  
Team Red /  
White / Jersey  
Gold / (White)



CV2627-719  
Tour Yellow /  
Black /  
Anthracite /  
(Black)

### Product Features

- This product is made with 100% recycled polyester fibers.
- Dri-FIT technology helps keep you dry and comfortable.
- Knit fabric is smooth, lightweight and doesn't cling to your body.
- Mesh panels on the back and sides help you stay cool.
- Standard fit for a relaxed, easy feel.

# LIFECYCLE ENDS DEC 2022





## NEW Women's Academy 21 Polo

RRP £26.95

### Lifecycle

January 2021 - December 2022

### Available in

XS - S - M - L - XL



CV2673-014  
Black / White /  
Anthracite /  
(White)



CV2673-100  
White / Black /  
Black / (Black)



CV2673-362  
Light Green  
Spark / White /  
Pine Green /  
(White)



CV2673-453  
Obsidian / White  
/ Royal Blue /  
(White)



CV2673-463  
Royal Blue /  
White / Obsidian  
/ (White)



CV2673-657  
University Red /  
White / Gym Red  
/ (White)



CV2673-677  
Team Red /  
White / Jersey  
Gold / (White)



CV2673-719  
Tour Yellow /  
Black /  
Anthracite /  
(Black)

### Product Features

- This product is made with 100% recycled polyester fibers.
- Nike Dri-FIT technology helps keep you dry and comfortable.
- Mesh on the back and sleeves helps keep you cool.
- Double knit fabric feels soft and smooth.
- Standard fit for a relaxed, easy feel.
- Fold-over collar.
- 2-button placket.

# LIFECYCLE ENDS DEC 2022



 Sustainable materials

## **NEW** Women's Academy 21 Drill Top

RRP £32.95

### Lifecycle

January 2021 - December 2022

### Available in

XS - S - M - L - XL



CV2653-014  
Black / White /  
Anthracite /  
(White)



CV2653-100  
White / Black /  
Black / (Black)



CV2653-362  
Light Green  
Spark / White /  
Pine Green /  
(White)



CV2653-453  
Obsidian / White  
/ Royal Blue /  
(White)



CV2653-463  
Royal Blue /  
White / Obsidian  
/ (White)



CV2653-657  
University Red /  
White / Gym Red  
/ (White)



CV2653-677  
Team Red /  
White / Jersey  
Gold / (White)

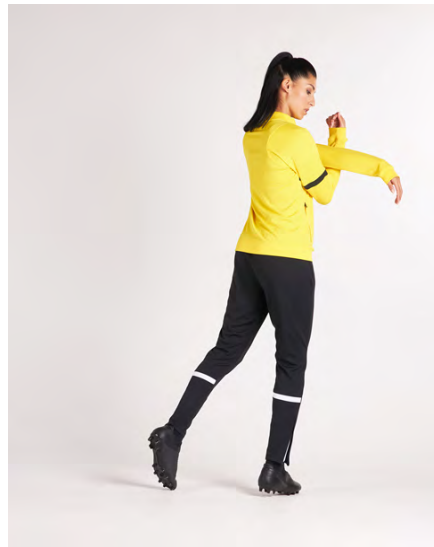


CV2653-719  
Tour Yellow /  
Black /  
Anthracite /  
(Black)

### Product Features

- This product is made with 100% recycled polyester fibers.
- Dri-FIT technology moves sweat from your skin for quicker evaporation—helping you stay dry and comfortable.
- Lightweight fabric stretches with you, while thumbholes help keep your sleeves in place.
- 1/4-length zipper lets you adjust your ventilation when things heat up.
- Standard fit for a relaxed, easy feel.

# LIFECYCLE ENDS DEC 2022



**NEW** Women's Academy 21 Track Jacket

RRP £34.95

**Lifecycle**

January 2021 - December 2022

**Available in**

XS - S - M - L - XL


CV2677-014  
Black / White /  
Anthracite /  
(White)

CV2677-100  
White / Black /  
Black / (Black)

CV2677-362  
Light Green  
Spark / White /  
Pine Green /  
(White)

CV2677-453  
Obsidian / White  
/ Royal Blue /  
(White)

CV2677-463  
Royal Blue /  
White / Obsidian  
/ (White)

CV2677-657  
University Red /  
White / Gym Red  
/ (White)

CV2677-677  
Team Red /  
White / Jersey  
Gold / (White)

CV2677-719  
Tour Yellow /  
Black /  
Anthracite /  
(Black)

**Product Features**

- This product is made with at least 75% recycled polyester fibers.
- Dri-FIT technology helps keep you dry and comfortable.
- Knit fabric feels soft, warm and slightly stretchy.
- Mesh panels across the chest help keep you cool.
- Standard fit for a relaxed, easy feel.
- Zippered pockets.

**LIFECYCLE ENDS DEC 2022**



## **NEW** Women's Academy 21 Short

RRP £16.95

### Lifecycle

January 2021 - December 2022

### Available in

XS - S - M - L - XL



CV2649-010  
Black / White /  
White / (White)



CV2649-451  
Obsidian / White  
/ White / (White)

### Product Features

- This product is made with 100% recycled polyester fibers.
- Dri-FIT technology helps keep you dry and comfortable.
- Drawcord waistband gives you the perfect fit.
- Mesh stripes add breathability.
- Standard fit for a relaxed, easy feel.

# LIFECYCLE ENDS DEC 2022





## **NEW** Women's Academy 21 Pant

RRP £30.95

### Lifecycle

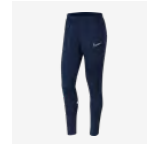
January 2021 - December 2022

### Available in

XS - S - M - L - XL



CV2665-010  
Black / White /  
White / (White)



CV2665-451  
Obsidian / White  
/ White / (White)

### Product Features

- This product is made with 100% recycled polyester fibers.
- Dri-FIT technology moves sweat from your skin for quicker evaporation—helping you stay dry and comfortable.
- The tapered design features zippered hems so you can change quickly over your shoes or cleats.
- An elastic waistband is lined with mesh for a breathable, snug feel.
- Standard fit for a relaxed, easy feel.
- Zippered pockets.

# LIFECYCLE ENDS DEC 2022



## Academy Pro Top

RRP £19.95

### Lifecycle

January 2020 - December 2021

### Available in

XS - S - M - L - XL - 2XL


BV6926-073  
Anthracite /  
Black / Black /  
(White)

BV6926-074  
Anthracite /  
Green Strike /  
Green Strike /  
(White)

BV6926-075  
Anthracite /  
Photo Blue /  
Photo Blue /  
(White)

BV6926-079  
Anthracite /  
Bright Crimson /  
Bright Crimson /  
(White)

### Product Features

- This product is made with at least 75% recycled polyester fibers.
- Dri-FIT technology helps you stay dry, comfortable and focused.
- Mesh chest stripe and back panel create breathability.
- Ribbed fabric is soft and slightly textured.
- Standard fit for a relaxed, easy feel.
- Materials vary based on factory. Check label for actual content.





 Sustainable materials

## Academy Pro Top (Youth)

RRP £12.95

### Lifecycle

January 2020 - December 2021

### Available in

XS - S - M - L  
XL

RRP £12.95

RRP £14.95



BV6947-062  
Anthracite /  
Photo Blue /  
Photo Blue /  
(White)



BV6947-064  
Anthracite /  
Bright Crimson /  
Bright Crimson /  
(White)



BV6947-068  
Anthracite /  
Green Strike /  
Green Strike /  
(White)



BV6947-069  
Anthracite /  
Black / Black /  
(White)

### Product Features

- This product is made with at least 75% recycled polyester fibers.
- Dri-FIT technology helps you stay dry, comfortable and focused.
- Ribbed fabric is soft and slightly textured for a premium feel.
- Mesh chest stripe and back panel provides added breathability.
- Standard fit for a relaxed, easy feel.



## Academy Pro Polo

RRP £34.95

### Lifecycle

January 2020 - December 2021

### Available in

S - M - L - XL - 2XL



BV6922-060  
Anthracite /  
Green Strike /  
(White)



BV6922-062  
Anthracite /  
Black / (White)



BV6922-068  
Anthracite /  
Photo Blue /  
(White)



BV6922-069  
Anthracite /  
Bright Crimson /  
(White)

### Product Features

- This product is made with 100% recycled polyester fibers.
- Dri-FIT technology helps you stay dry, comfortable and focused.
- Soft knit fabric has a little bit of stretch.
- Standard fit for a relaxed, easy feel.



Sustainable materials



 Sustainable materials

## Academy Pro Polo (Youth)

RRP £26.95

### Lifecycle

January 2020 - December 2021

### Available in

XS - S - M - L  
XL

RRP £26.95

RRP £31.95



BV6949-060  
Anthracite /  
Green Strike /  
(White)



BV6949-062  
Anthracite /  
Black / (White)



BV6949-067  
Anthracite /  
Photo Blue /  
(White)



BV6949-069  
Anthracite /  
Bright Crimson /  
(White)

### Product Features

- This product is made with 100% recycled polyester fibers.
- Dri-FIT technology helps keep you dry and comfortable.
- Ribbed fabric is soft and slightly textured for a premium feel.
- Fold-over ribbed collar delivers a timeless, professional look.





## Academy Pro Drill Top

RRP £37.95

### Lifecycle

January 2020 - December 2021

### Available in

S - M - L - XL - 2XL



BV6916-010  
Black /  
Anthracite /  
Black / (White)



BV6916-398  
Green Strike /  
Anthracite /  
Green Strike /  
(White)



BV6916-406  
Photo Blue /  
Anthracite /  
Photo Blue /  
(White)



BV6916-635  
Bright Crimson /  
Anthracite /  
Bright Crimson /  
(White)

### Product Features

- Body: 100% Recycled Polyester. Mesh: 100% Polyester.
- Dri-FIT technology moves sweat from your skin for quicker evaporation — helping you stay dry, comfortable and focused.
- Stretchy fabric fits close to your arms. Invisible Thumb Loops hold your sleeves in place or remain concealed when not in use.
- Body fabric has a soft interior to help keep your core warm. The 1/4-length zipper lets you adjust your ventilation.



## Academy Pro Drill Top (Youth)

RRP £29.95

### Lifecycle

January 2020 - December 2021

### Available in

XS - S - M - L  
XL

RRP £29.95

RRP £34.95



BV6942-010  
Black /  
Anthracite /  
Black / (White)



BV6942-398  
Green Strike /  
Anthracite /  
Green Strike /  
(White)



BV6942-406  
Photo Blue /  
Anthracite /  
Photo Blue /  
(White)



BV6942-635  
Bright Crimson /  
Anthracite /  
Bright Crimson /  
(White)

### Product Features

- 100% Polyester.
- Dri-FIT technology helps you stay dry, comfortable and focused.
- Stretchy, lightweight fabric fits close to your arms.
- Invisible Thumb Loops hold your sleeves in place or remain concealed when not in use.
- Fabric with a lightly textured interior helps keep your core warm.
- The 1/4-length zipper lets you adjust your ventilation.



## Academy Pro Knit Track Jacket

RRP £42.95

### Lifecycle

January 2020 - December 2021

### Available in

S - M - L - XL - 2XL


BV6918-060  
Anthracite /  
Green Strike /  
(White)

BV6918-067  
Anthracite /  
Photo Blue /  
(White)

BV6918-068  
Anthracite /  
Bright Crimson /  
(White)

BV6918-069  
Anthracite /  
Black / (White)

### Product Features

- 100% Polyester.
- Dri-FIT technology helps you stay dry, comfortable and focused.
- Zippered side pockets securely store small items.
- Standard fit for a relaxed, easy feel.
- Full-length zipper.



## Academy Pro Knit Track Jacket (Youth)

RRP £31.95

### Lifecycle

January 2020 - December 2021

### Available in

XS - S - M - L  
XL

RRP £31.95

RRP £37.95



BV6948-061  
Anthracite /  
Black / (White)



BV6948-064  
Anthracite /  
Green Strike /  
(White)



BV6948-068  
Anthracite /  
Bright Crimson /  
(White)



BV6948-069  
Anthracite /  
Photo Blue /  
(White)

### Product Features

- 100% Polyester.
- Dri-FIT technology helps you stay dry, comfortable and focused.
- Zippered side pockets securely store small items.
- Standard fit for a relaxed, easy feel.
- Full-length zipper.



## Academy Pro Knit Short

RRP £19.95

### Lifecycle

January 2020 - December 2021

### Available in

XS - S - M - L - XL - 2XL



BV6924-061  
Anthracite /  
Black / (White)



BV6924-064  
Anthracite /  
Green Strike /  
(White)



BV6924-067  
Anthracite /  
Bright Crimson /  
(White)



BV6924-069  
Anthracite /  
Photo Blue /  
(White)

### Product Features

- This product is made with at least 50% recycled polyester fibers.
- Dri-FIT technology helps you stay dry, comfortable and focused.
- Mesh-lined waistband and mesh lower back area adds breathability.
- Lightly ribbed fabric has a little bit of stretch.
- Slim fit for a tailored feel.
- Side pockets.
- Elastic waistband and drawcord.







## Academy Knit Short (Youth)

RRP £12.95

### Lifecycle

January 2020 - December 2021

### Available in

XS - S - M - L  
XL

RRP £12.95

RRP £14.95



BV6946-062  
Anthracite /  
Bright Crimson /  
(White)



BV6946-066  
Anthracite /  
Photo Blue /  
(White)



BV6946-067  
Anthracite /  
Black / (White)



BV6946-068  
Anthracite /  
Green Strike /  
(White)

### Product Features

- This product is made with at least 50% recycled polyester fibers.
- Dri-FIT technology helps you stay dry, comfortable and focused.
- Mesh side stripes add ventilation.
- Standard fit for a relaxed, easy feel.
- Side pockets.



Sustainable materials



## Academy Pro Knit Pant

RRP £34.95

### Lifecycle

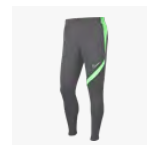
January 2020 - December 2021

### Available in

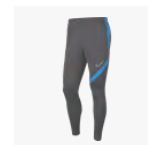
XS - S - M - L - XL - 2XL



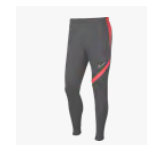
BV6920-061  
Anthracite /  
Black / (White)



BV6920-064  
Anthracite /  
Green Strike /  
(White)



BV6920-067  
Anthracite /  
Photo Blue /  
(White)



BV6920-070  
Anthracite /  
Bright Crimson /  
(White)

### Product Features

- This product is made with at least 75% recycled polyester fibers.
- Dri-FIT technology helps you stay dry, comfortable and focused.
- Zippered side pockets store your essentials.
- Standard fit for a relaxed, easy feel.



Sustainable materials



 Sustainable materials

## Academy Pro Knit Pant (Youth)

RRP £25.95

### Lifecycle

January 2020 - December 2021

### Available in

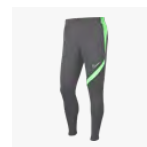
XS - S - M - L  
XL

RRP £25.95

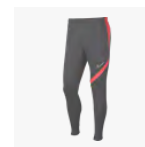
RRP £29.95



BV6944-064  
Anthracite /  
Black / (White)



BV6944-066  
Anthracite /  
Green Strike /  
(White)



BV6944-067  
Anthracite /  
Bright Crimson /  
(White)



BV6944-069  
Anthracite /  
Photo Blue /  
(White)

### Product Features

- This product is made with at least 75% recycled polyester fibers.
- Dri-FIT technology helps you stay dry, comfortable and focused.
- Zippered side pockets store your essentials.
- Standard fit for a relaxed, easy feel.



## Women's Academy Pro Top

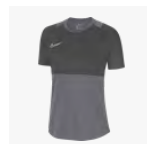
RRP £19.95

### Lifecycle

January 2020 - December 2021

### Available in

XS - S - M - L - XL



BV6940-010  
Anthracite /  
Black / Black /  
(White)



BV6940-062  
Anthracite /  
Green Strike /  
Green Strike /  
(White)



BV6940-066  
Anthracite /  
Bright Crimson /  
Bright Crimson /  
(White)



BV6940-068  
Anthracite /  
Photo Blue /  
Photo Blue /  
(White)

### Product Features

- This product is made with at least 50% recycled polyester fibers.
- Dri-FIT technology helps you stay dry, comfortable and focused.
- Ribbed fabric is soft and slightly textured for a premium feel.
- Mesh chest stripe and back panel provides added breathability.
- Standard fit for a relaxed, easy feel.

# IN FINAL YEAR



## Women's Academy Pro Drill Top

RRP £37.95

### Lifecycle

January 2020 - December 2021

### Available in

XS - S - M - L - XL



BV6930-011  
Black /  
Anthracite /  
Black / (White)



BV6930-398  
Green Strike /  
Anthracite /  
Green Strike /  
(White)



BV6930-406  
Photo Blue /  
Anthracite /  
Photo Blue /  
(White)



BV6930-635  
Bright Crimson /  
Anthracite /  
Bright Crimson /  
(White)

### Product Features

- 100% Polyester.
- Dri-FIT technology helps you stay dry, comfortable and focused.
- Stretchy, unbrushed fabric fits close to your arms and invisible thumb loops help hold your sleeves in place.
- The curved hem creates a comfortable, flattering fit made for speed.
- Body fabric has a lightly brushed interior to help keep your core warm.
- The 1/4-length zipper lets you adjust your ventilation.





## Women's Academy Pro Knit Track Jacket

RRP £42.95

### Lifecycle

January 2020 - December 2021

### Available in

XS - S - M - L - XL



BV6932-010  
Anthracite /  
Black / (White)



BV6932-060  
Anthracite /  
Photo Blue /  
(White)



BV6932-061  
Anthracite /  
Green Strike /  
(White)



BV6932-068  
Anthracite /  
Bright Crimson /  
(White)

### Product Features

- 100% Polyester.
- Dri-FIT technology helps you stay dry, comfortable and focused.
- Mesh panels across the chest provide added breathability.
- Zippered side pockets securely store small items.
- Standard fit for a relaxed, easy feel.



## Women's Academy Pro Knit Short

RRP £19.95

### Lifecycle

January 2020 - December 2021

### Available in

XS - S - M - L - XL



BV6938-010  
Anthracite /  
Black / (White)



BV6938-062  
Anthracite /  
Photo Blue /  
(White)



BV6938-064  
Anthracite /  
Green Strike /  
(White)



BV6938-068  
Anthracite /  
Bright Crimson /  
(White)

### Product Features

- This product is made with at least 50% recycled polyester fibers.
- Dri-FIT technology helps keep you dry and comfortable.
- Elastic waistband with drawcord feels snug and comfortable.
- Standard fit for a relaxed, easy feel.
- Side pockets.



## Women's Academy Pro Knit Pant

RRP £34.95

### Lifecycle

January 2020 - December 2021

### Available in

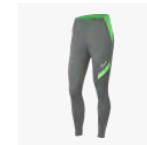
XS - S - M - L - XL



BV6934-010  
Anthracite /  
Black / (White)



BV6934-060  
Anthracite /  
Photo Blue /  
(White)



BV6934-062  
Anthracite /  
Green Strike /  
(White)



BV6934-067  
Anthracite /  
Bright Crimson /  
(White)

### Product Features

- This product is made with at least 75% recycled polyester fibers.
- Dri-FIT technology helps you stay dry, comfortable and focused.
- Flexible fabric stretches with you as you move so you're quickest to every ball.
- Zippered hems let you change easily over boots or shoes.
- Standard fit for a relaxed, easy feel.
- Zippered side pockets.



## Park 20 Top

RRP £12.95

### Lifecycle

January 2020 - December 2023

### Available in

S - M - L - XL - 2XL


BV6883-010  
Black / White /  
(White)

BV6883-100  
White / Black /  
(Black)

BV6883-302  
Pine Green /  
White / (White)

BV6883-410  
Obsidian / White  
/ (White)

BV6883-463  
Royal Blue /  
White / (White)

BV6883-657  
University Red /  
White / (White)

BV6883-719  
Tour Yellow /  
Black / (Black)

### Product Features

- This product is made with 100% recycled polyester fibers.
- Dri-FIT technology helps you stay dry, comfortable and focused.
- Slim fit for a tailored feel.
- Shoulder piping inspires a classic football look.





 Sustainable materials

## Park 20 Top (Youth)

**RRP £8.95**

### Lifecycle

January 2020 - December 2023

### Available in

XS - S - M - L  
XL

RRP £8.95

RRP £9.95



BV6905-010  
Black / White /  
(White)



BV6905-100  
White / Black /  
(Black)



BV6905-302  
Pine Green /  
White / (White)



BV6905-451  
Obsidian / White  
/ (White)



BV6905-463  
Royal Blue /  
White / (White)



BV6905-657  
University Red /  
White / (White)



BV6905-719  
Tour Yellow /  
Black / (Black)

### Product Features

- This product is made with 100% recycled polyester fibers.
- Dri-FIT technology helps you stay dry, comfortable and focused.
- Slim fit for a tailored feel.
- Shoulder piping inspires a classic football look.





## Park 20 Polo

RRP £21.95

### Lifecycle

January 2020 - December 2023

### Available in

S - M - L - XL - 2XL



BV6879-010  
Black / White /  
(White)



BV6879-100  
White / Black /  
(Black)



BV6879-302  
Pine Green /  
White / (White)



BV6879-410  
Obsidian / White  
/ (White)



BV6879-463  
Royal Blue /  
White / (White)



BV6879-657  
University Red /  
White / (White)



BV6879-719  
Tour Yellow /  
Black / (Black)

### Product Features

- This product is made with 100% recycled polyester fibers.
- Dri-FIT technology helps keep you dry and comfortable.
- Standard fit for a relaxed, easy feel.
- Fold-over collar with a two-button placket delivers timeless style.
- Shoulder piping inspires a classic football look.

# LIFECYCLE ENDS DEC 2023



**Sustainable materials**

## Park 20 Polo (Youth)

**RRP £14.95**

### Lifecycle

January 2020 - December 2023

### Available in

XS - S - M - L  
XL

RRP £14.95

RRP £16.95



BV6903-010  
Black / White /  
(White)



BV6903-100  
White / Black /  
(Black)



BV6903-302  
Pine Green /  
White / (White)



BV6903-451  
Obsidian / White  
/ (White)



BV6903-463  
Royal Blue /  
White / (White)



BV6903-657  
University Red /  
White / (White)



BV6903-719  
Tour Yellow /  
Black / (Black)

### Product Features

- This product is made with 100% recycled polyester fibers.
- Dri-FIT technology helps keep you dry and comfortable.
- Standard fit for a relaxed, easy feel.
- Fold-over collar with a two-button placket delivers timeless style.
- Shoulder piping inspires a classic football look.



## Park 20 Crew Top

RRP £25.95

### Lifecycle

January 2020 - December 2023

### Available in

S - M - L - XL - 2XL


BV6875-010  
Black / White /  
(White)

BV6875-100  
White / Black /  
(Black)

BV6875-302  
Pine Green /  
White / (White)

BV6875-410  
Obsidian / White  
/ (White)

BV6875-463  
Royal Blue /  
White / (White)

BV6875-657  
University Red /  
White / (White)

BV6875-719  
Tour Yellow /  
Black / (Black)

### Product Features

- 100% Polyester.
- Dri-FIT technology helps you stay dry, comfortable and focused.
- Standard fit for a relaxed, easy feel.
- Shoulder piping inspires a classic football look.



## Park 20 Crew Top (Youth)

RRP £18.95

### Lifecycle

January 2020 - December 2023

### Available in

XS - S - M - L  
XL

RRP £18.95

RRP £21.95



BV6901-010  
Black / White /  
(White)



BV6901-100  
White / Black /  
(Black)



BV6901-302  
Pine Green /  
White / (White)



BV6901-451  
Obsidian / White  
/ (White)



BV6901-463  
Royal Blue /  
White / (White)



BV6901-657  
University Red /  
White / (White)



BV6901-719  
Tour Yellow /  
Black / (Black)

### Product Features

- 100% Polyester.
- Dri-FIT technology helps you stay dry, comfortable and focused.
- Standard fit for a relaxed, easy feel.
- Shoulder piping inspires a classic football look.



## Park 20 Rain Jacket

RRP £29.95

### Lifecycle

January 2020 - December 2023

### Available in

S - M - L - XL - 2XL



BV6881-010  
Black / White /  
(White)



BV6881-060  
Anthracite /  
Anthracite /  
(White)



BV6881-302  
Pine Green /  
White / (White)



BV6881-410  
Obsidian / White  
/ (White)



BV6881-463  
Royal Blue /  
White / (White)



BV6881-657  
University Red /  
White / (White)



BV6881-719  
Tour Yellow /  
Black / (Black)

### Product Features

- This product is made with at least 75% recycled polyester fibers.
- Dri-FIT technology and water-repellant fabric help you stay dry in light rain.
- Side pockets with mesh lining help keep belongings safe and dry.
- Shoulder piping inspires a classic football look.





 Sustainable materials

## Park 20 Rain Jacket (Youth)

RRP £22.95

### Lifecycle

January 2020 - December 2023

### Available in

XS - S - M - L  
XL

RRP £22.95

RRP £26.95



BV6904-010  
Black / White /  
(White)



BV6904-060  
Anthracite /  
Anthracite /  
(White)



BV6904-302  
Pine Green /  
White / (White)



BV6904-451  
Obsidian / White  
/ (White)



BV6904-463  
Royal Blue /  
White / (White)



BV6904-657  
University Red /  
White / (White)



BV6904-719  
Tour Yellow /  
Black / (Black)

### Product Features

- This product is made with 100% recycled polyester fibers.
- Dri-FIT technology and water-repellant fabric help you stay dry in light rain.
- Side pockets with mesh lining help keep belongings safe and dry.
- Shoulder piping inspires a classic football look.



## Park 20 Knit Track Jacket

RRP £29.95

### Lifecycle

January 2020 - December 2023

### Available in

S - M - L - XL - 2XL



BV6885-010  
Black / White /  
(White)



BV6885-100  
White / Black /  
(Black)



BV6885-302  
Pine Green /  
White / (White)



BV6885-410  
Obsidian / White  
/ (White)



BV6885-463  
Royal Blue /  
White / (White)



BV6885-657  
University Red /  
White / (White)



BV6885-719  
Tour Yellow /  
Black / (Black)

### Product Features

- 100% Polyester.
- Dri-FIT technology helps you stay dry and comfortable.
- Knit fabric feels soft and comfortable.
- Standard fit for a relaxed, easy feel.
- Side pockets with mesh lining help keep your belongings safe and dry.



## Park 20 Knit Track Jacket (Youth)

RRP £21.95

### Lifecycle

January 2020 - December 2023

### Available in

XS - S - M - L  
XL

RRP £21.95

RRP £25.95



BV6906-010  
Black / White /  
(White)



BV6906-100  
White / Black /  
(Black)



BV6906-302  
Pine Green /  
White / (White)



BV6906-451  
Obsidian / White  
/ (White)



BV6906-463  
Royal Blue /  
White / (White)



BV6906-657  
University Red /  
White / (White)



BV6906-719  
Tour Yellow /  
Black / (Black)

### Product Features

- 100% Polyester.
- Dri-FIT technology helps you stay dry and comfortable.
- Knit fabric feels soft and comfortable.
- Standard fit for a relaxed, easy feel.
- Side pockets with mesh lining help keep your belongings safe and dry.



Sustainable materials



## Park 20 Knit Short

RRP £22.95

### Lifecycle

January 2021 - December 2023

### Available in

S - M - L - XL - 2XL



CW6152-010  
Black / Black /  
(White)



CW6152-451  
Obsidian /  
Obsidian /  
(White)

### Product Features

- This product is made with 100% recycled polyester fibers.
- Dri-FIT technology helps keep you dry and comfortable.
- Zippered side pockets let you secure your essentials.
- Elastic waistband stretches for a secure fit.
- Standard fit for a relaxed, easy feel.



 Sustainable materials

## Park 20 Knit Short (Youth)

RRP £14.95

### Lifecycle

January 2021 - December 2023

### Available in

XS - S - M - L  
XL

RRP £14.95

RRP £16.95



DB8244-010  
Black / Black /  
(White)



DB8244-451  
Obsidian /  
Obsidian /  
(White)

### Product Features

- This product is made with 100% recycled polyester fibers.
- Dri-FIT technology helps keep you dry and comfortable.
- Zippered side pockets let you secure your essentials.
- Elastic waistband stretches for a secure fit.
- Standard fit for a relaxed, easy feel.





## Park 20 Knit Pant

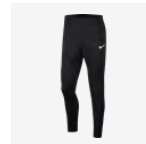
RRP £26.95

### Lifecycle

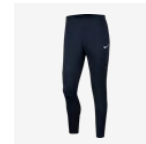
January 2020 - December 2023

### Available in

S - M - L - XL - 2XL



BV6877-010  
Black / Black /  
(White)



BV6877-410  
Obsidian /  
Obsidian /  
(White)

### Product Features

- 100% Polyester.
- Dri-FIT technology helps keep you dry and comfortable.
- Panels on the calves make it easy to change with boots.
- Side pockets hold your belongings.
- Standard fit for a relaxed, easy feel.
- Elastic waistband and drawcord.



## Park 20 Knit Pant (Youth)

RRP £18.95

### Lifecycle

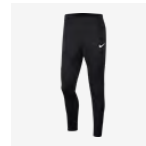
January 2020 - December 2023

### Available in

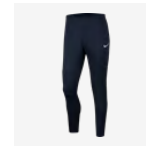
XS - S - M - L  
XL

RRP £18.95

RRP £21.95



BV6902-010  
Black / Black /  
(White)



BV6902-451  
Obsidian /  
Obsidian /  
(White)

### Product Features

- 100% Polyester.
- Dri-FIT technology helps keep you dry and comfortable.
- Panels on the calves make it easy to change with boots.
- Side pockets hold your belongings.
- Standard fit for a relaxed, easy feel.
- Elastic waistband and drawcord.



## **NEW** Team Park 20 Fall Jacket

RRP £79.95

### Lifecycle

January 2021 - December 2023

### Available in

S - M - L - XL - 2XL



CW6157-010  
Black / (White)



CW6157-451  
Obsidian /  
(White)

### Product Features

- 100% Polyester.
- Water-repellent fabric helps keep you dry when the elements turn.
- Elongated zipper hits above your chin for extra coverage.
- Elastic cuffs and hem help keep the jacket in place as you move.
- Snap pockets let you secure your essentials.
- Standard fit for a relaxed, easy feel.
- Full zipper.



**NEW** Team Park 20 Fall Jacket  
(Youth)

RRP £59.95

**Lifecycle**

January 2021 - December 2023

**Available in**

XS - S - M - L  
XL

RRP £59.95

RRP £71.95


CW6159-010  
Black / (White)

CW6159-451  
Obsidian /  
(White)

**Product Features**

- 100% Polyester.
- Water-repellent fabric helps keep you dry when the elements turn.
- Elongated zipper hits above your chin for extra coverage.
- Elastic cuffs and hem help keep the jacket in place as you move.
- Snap pockets let you secure your essentials.
- Loose fit for a roomy feel.
- Full zipper.



## **NEW** Team Park 20 Winter Jacket

RRP £104.95

### Lifecycle

January 2021 - December 2023

### Available in

S - M - L - XL - 2XL



CW6156-010  
Black / (White)



CW6156-451  
Obsidian /  
(White)

### Product Features

- 100% Polyester.
- Water-repellent finish helps keep you dry when it starts to rain.
- Synthetic fill provides lightweight warmth.
- Elongated, full-zip design covers you from the elements.
- Loose fit for a roomy feel.
- Snap-button pockets.





**NEW** Team Park 20 Winter Jacket  
(Youth)

RRP £79.50

**Lifecycle**

January 2021 - December 2023

**Available in**

XS - S - M - L  
XL

RRP £79.50

RRP £94.95


CW6158-010  
Black / (White)

CW6158-451  
Obsidian /  
(White)

**Product Features**

- 100% Polyester.
- Water-repellent finish helps keep you dry when it starts to rain.
- Synthetic fill provides lightweight warmth.
- Elongated, full-zip design covers you from the elements.
- Loose fit for a roomy feel.
- Snap-button pockets.



 Sustainable materials

## **NEW** Women's Park 20 Knit Short

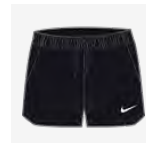
RRP £22.95

### Lifecycle

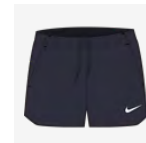
January 2021 - December 2023

### Available in

XS - S - M - L - XL



CW6154-010  
Black / Black /  
(White)



CW6154-451  
Obsidian /  
Obsidian /  
(White)

### Product Features

- This product is made with 100% recycled polyester fibers.
- Dri-FIT technology helps keep you dry and comfortable.
- Elastic waistband and hidden drawcord give you a secure fit.
- Zippered pockets secure your everyday essentials.
- Standard fit for a relaxed, easy feel.



## Women's Park 20 Fall Jacket

RRP £79.95

### Lifecycle

January 2021 - December 2023

### Available in

XS - S - M - L - XL



DC8039-010  
Black / (White)



DC8039-451  
Obsidian /  
(White)

### Product Features

- 100% Polyester.
- Thermal fabric helps keep you warm.
- Water-repellent treatment helps keep you dry in light rain.
- Elastic cuffs and hem hold the jacket in place as you move.
- Snap pockets secure your everyday essentials.
- Standard fit for a relaxed, easy feel.



**NEW** Women's Park 20 Winter Jacket

RRP £104.95

**Lifecycle**

January 2021 - December 2023

**Available in**

XS - S - M - L - XL



DC8036-010  
Black / (White)



DC8036-451  
Obsidian /  
(White)

**Product Features**

- 100% Polyester.
- Water-repellent finish helps you stay dry in light rain.
- Synthetic-fill insulation provides warmth without weighing you down.
- French terry lining at the hood, pockets and collar feels soft and warm.
- Loose fit and longer length cover you from the elements.
- Loose fit for a roomy feel.
- Full-length zipper.
- Snap pockets.



## Nike Squad Crew Socks

RRP £8.95

### Lifecycle

January 2020 - December 2021

### Available in

S - M - L - XL



SK0030-010  
Black / (White)



SK0030-100  
White / (Black)



SK0030-410  
Midnight Navy /  
(White)



SK0030-463  
Royal Blue /  
(White)



SK0030-657  
University Red /  
(White)

### Product Features

- 88% Polyester/9% Cotton/3% Spandex.
- Sweat-wicking fabric helps keep feet dry and comfortable.
- Cushioning in high-wear areas adds durability.





## **NEW** Training Bib

RRP £21.95

### Lifecycle

January 2021 - December 2023

### Available in

S - L



CW3845-100  
White / (Black)



CW3845-313  
Action Green /  
(Black)



CW3845-406  
Photo Blue /  
(Black)



CW3845-616  
Vivid Pink /  
(Black)



CW3845-702  
Volt / (Black)

### Product Features

- 100% Polyester.
- Dri-FIT technology helps keep you dry and comfortable.
- Mesh fabric feels lightweight and breathable.
- Standard fit for a relaxed, easy feel.
- Available in a pack of 3 only.



## Team Football Beanie

RRP £16.95

### Lifecycle

January 2019 - December 2021

### Available in

ONE SIZE



AV9751-010  
Black / (White)



AV9751-060  
Anthracite /  
(White)



AV9751-451  
Obsidian /  
(White)

### Product Features

- Body: 62% Cotton/38% Polyester. Cuff: 100% Acrylic.
- Dri-FIT technology helps you stay dry and comfortable.
- Soft, stretchy fabric feels warm and comfortable.



## Hyper Warm Academy Football Gloves

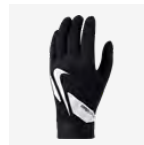
RRP £22.95

### Lifecycle

October 2020 - December 2022

### Available in

S - M - L - XL



CU1589-010  
Black / Black /  
(White)

### Product Features

- 62% Polyester/28% Nylon/5% Rubber/5% Spandex.
- Nike Pro HyperWarm technology helps keep hands warm without overheating.
- Silicone on the fingers and palms helps you grip the ball.
- Forefinger and thumb tips are touch-screen friendly so you can access your phone.
- Flexible cuffs stretch for a secure fit.



## Hyper Warm Academy Football Gloves (Youth)

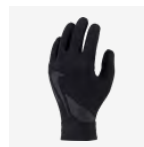
RRP £16.95

### Lifecycle

October 2020 - December 2022

### Available in

S - M - L



CU1595-011  
Black / Black /  
(White)

### Product Features

- 62% Polyester/28% Nylon/5% Rubber/5% Spandex.
- Nike Pro HyperWarm technology helps keep hands warm without overheating.
- Silicone on the fingers and palms helps you grip the ball.
- Touch-screen friendly tips on the forefinger and thumb let you access your phone.
- Flexible cuffs stretch for a secure fit.





## Academy 18 Football Rain Jacket

RRP £47.95

### Lifecycle

January 2018 - December 2022

Futures only

### Available in

XS - S - M - L - XL - 2XL

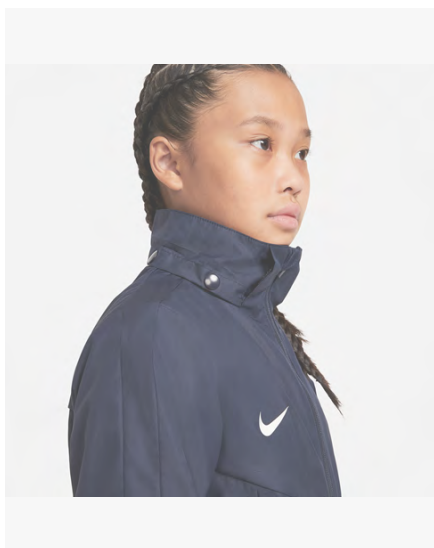

893796-010  
Black / Black /  
(White)

893796-451  
Obsidian /  
Obsidian /  
(White)

### Product Features

- 100% Polyester.
- Nike Repel fabric resists light rain and wind.
- Structured hood packs away into the collar when you don't need it.
- Hem is longer in the back to help keep you covered as you move.
- Hook-and-loop closures at the sleeve cuffs let you adjust the fit.
- Full-length zipper.
- Drawcord hem.
- Zippered pockets.





## Academy 18 Football Rain Jacket (Youth)

RRP £31.95

### Lifecycle

January 2018 - December 2022

Futures only

### Available in

XS - S - M - L  
XL

RRP £31.95

RRP £37.95


893819-010  
Black / Black /  
(White)

893819-451  
Obsidian /  
Obsidian /  
(White)

### Product Features

- 100% Polyester.
- Nike Repel fabric resists light rain and wind.
- Structured hood packs away into the collar when you don't need it.
- Hem is longer in the back to help keep you covered as you move.
- Hook-and-loop closures at the sleeve cuffs let you adjust the fit.
- Full-length zipper.
- Drawcord hem.
- Zippered pockets.



**LIFESTYLE**





## **NEW** Team Club 20 Tee

**RRP £17.95**

### Lifecycle

January 2021 - December 2023

### Available in

S - M - L - XL - 2XL - 3XL


CZ0881-010  
Black / (White)

CZ0881-071  
Charcoal  
Heather / (White)

CZ0881-100  
White / (Black)

CZ0881-302  
Pine Green /  
(White)

CZ0881-451  
Obsidian /  
(White)

CZ0881-463  
Royal Blue /  
(White)

CZ0881-657  
University Red /  
(White)

CZ0881-719  
Tour Yellow /  
(Black)

### Product Features

- 100% Cotton.
- Standard fit for a relaxed, easy feel.
- Ribbed collar.



## **NEW** Team Club 20 Tee (Youth)

RRP £10.95

### Lifecycle

January 2021 - December 2023

### Available in

XS - S - M - L  
XL

RRP £10.95

RRP £12.95



CZ0909-010  
Black / (White)



CZ0909-071  
Charcoal  
Heather / (White)



CZ0909-100  
White / (Black)



CZ0909-302  
Pine Green /  
(White)



CZ0909-451  
Obsidian /  
(White)



CZ0909-463  
Royal Blue /  
(White)



CZ0909-657  
University Red /  
(White)



CZ0909-719  
Tour Yellow /  
(Black)

### Product Features

- 100% Cotton.
- Standard fit for a relaxed, easy feel.
- Ribbed collar.



## NEW Team Club 20 Tee

RRP £24.95

### Lifecycle

January 2021 - December 2023

### Available in

S - M - L - XL - 2XL - 3XL



CW6936-010  
Black / (White)



CW6936-100  
White / (Black)



CW6936-451  
Obsidian /  
(White)



CW6936-657  
University Red /  
(White)

### Product Features

- 75% Polyester/13% Cotton/12% Rayon.
- The Nike Dri-FIT Park T-Shirt is made of soft, sweat-wicking fabric to help keep you comfortable during training or competition.
- Nike Dri-FIT technology helps you stay dry and comfortable.
- Lightweight fabric feels soft and slightly stretchy.
- Standard fit for a relaxed, easy feel.





## **NEW** Team Club 20 Tee (Youth)

**RRP £16.95**

### **Lifecycle**

January 2021 - December 2023

### **Available in**

XS - S - M - L  
XL

**RRP £16.95**
**RRP £19.95**


CW6941-010  
Black / (White)



CW6941-100  
White / (Black)



CW6941-451  
Obsidian /  
(White)



CW6941-657  
University Red /  
(White)

### **Product Features**

- 57% Cotton/43% Polyester.
- The Nike Dri-FIT Park T-Shirt is made of soft, sweat-wicking fabric to help keep you comfortable during training or competition.
- Nike Dri-FIT technology helps you stay dry and comfortable.
- Lightweight fabric feels soft and slightly stretchy.
- Standard fit for a relaxed, easy feel.
- Ribbed collar.



## NEW Park 20 Tee

RRP £19.95

### Lifecycle

January 2021 - December 2023

### Available in

S - M - L - XL - 2XL - 3XL



CW6952-010  
Black / (White)



CW6952-071  
Charcoal  
Heather / (White)



CW6952-100  
White / (Black)

### Product Features

- 57% Cotton/43% Polyester.
- The Nike Dri-FIT Park T-Shirt is made of soft, sweat-wicking fabric to help keep you comfortable during training or competition.
- Nike Dri-FIT technology helps you stay dry and comfortable.
- Lightweight fabric feels soft and slightly stretchy.
- Standard fit for a relaxed, easy feel.
- Ribbed collar.



## **NEW** Team Club 20 Crewneck

RRP £32.95

### Lifecycle

January 2021 - December 2023

### Available in

S - M - L - XL - 2XL - 3XL



CW6902-010  
Black / (White)



CW6902-063  
Dark Grey  
Heather / (Black)



CW6902-071  
Charcoal  
Heather / (White)



CW6902-451  
Obsidian /  
(White)

### Product Features

- 82% Cotton/18% Polyester.
- Fleece fabric feels soft and warm.
- Ribbed cuffs and hem help keep the top in place as you move.
- Standard fit for a relaxed, easy feel.



**NEW** Team Club 20 Crewneck  
(Youth)

RRP £23.95

**Lifecycle**

January 2021 - December 2023

**Available in**

XS - S - M - L  
XL

RRP £23.95

RRP £27.95


CW6904-010  
Black / (White)

CW6904-071  
Charcoal  
Heather / (White)

CW6904-451  
Obsidian /  
(White)

**Product Features**

- 82% Cotton/18% Polyester.
- Fleece fabric feels soft and warm.
- Ribbed cuffs and hem help keep the top in place as you move.
- Standard fit for a relaxed, easy feel.



## **NEW** Team Club 20 Hoodie

RRP £39.95

### Lifecycle

January 2021 - December 2023

### Available in

S - M - L - XL - 2XL - 3XL



CW6894-010  
Black / White /  
(White)



CW6894-071  
Charcoal  
Heather / White /  
(White)



CW6894-101  
White / White /  
(Wolf Grey)



CW6894-302  
Pine Green /  
White / (White)



CW6894-451  
Obsidian / White  
/ (White)



CW6894-463  
Royal Blue /  
White / (White)



CW6894-657  
University Red /  
White / (White)



CW6894-719  
Tour Yellow /  
Black / (Black)

### Product Features

- Body: 82% Cotton/18% Polyester. Hood lining: 100% Cotton.
- Fleece fabric feels soft and warm.
- Drawcord hood lets you adjust your coverage.
- Standard fit for a relaxed, easy feel.
- Front pocket.





**NEW** Team Club 20 Hoodie  
(Youth)

RRP £25.95

**Lifecycle**

January 2021 - December 2023

**Available in**

XS - S - M - L  
XL

RRP £25.95

RRP £29.95



CW6896-010  
Black / (White)



CW6896-071  
Charcoal  
Heather / (White)



CW6896-101  
White / (Wolf  
Grey)



CW6896-302  
Pine Green /  
(White)



CW6896-451  
Obsidian /  
(White)



CW6896-463  
Royal Blue /  
(White)



CW6896-657  
University Red /  
(White)



CW6896-719  
Tour Yellow /  
(Black)

**Product Features**

- Body: 82% Cotton/18% Polyester. Hood lining: 100% Cotton.
- Fleece fabric feels soft and warm.
- Ribbed cuffs and hem help hold the hoodie in place.
- Standard fit for a relaxed, easy feel.
- Front pocket.



**NEW** Team Club 20  
Full-Zip-Hoodie

RRP £42.95

**Lifecycle**

January 2021 - December 2023

**Available in**

S - M - L - XL - 2XL - 3XL


CW6887-010  
Black / White /  
(White)

CW6887-063  
Dark Grey  
Heather / Black /  
(Black)

CW6887-071  
Charcoal  
Heather / White /  
(White)

CW6887-451  
Obsidian / White  
/ (White)

CW6887-657  
University Red /  
White / (White)

**Product Features**

- Body: 82% Cotton/18% Polyester. Hood lining: 100% Cotton.
- Fleece fabric feels soft and warm.
- Drawcord lets you wear the hood loose or cinch out the cold.
- Standard fit for a relaxed, easy feel.
- Full-length zipper.
- Side Pockets.



**NEW** Team Club 20  
Full-Zip-Hoodie (Youth)

RRP £30.95

**Lifecycle**

January 2021 - December 2023

**Available in**

XS - S - M - L  
XL

RRP £30.95

RRP £35.95



CW6891-010  
Black / (White)



CW6891-063  
Dark Grey  
Heather / (Black)



CW6891-071  
Charcoal  
Heather / (White)



CW6891-451  
Obsidian /  
(White)



CW6891-657  
University Red /  
(White)

**Product Features**

- Body: 82% Cotton/18% Polyester. Hood lining: 100% Cotton.
- Fleece fabric feels soft and warm.
- Ribbed cuffs and hem help hold the hoodie in place.
- Standard fit for a relaxed, easy feel.
- Side pockets.



## **NEW** Team Club 20 Short

RRP £29.95

### Lifecycle

January 2021 - December 2023

### Available in

S - M - L - XL - 2XL



CW6910-010  
Black / White /  
(White)



CW6910-063  
Dark Grey  
Heather / Black /  
(Black)



CW6910-071  
Charcoal  
Heather / White /  
(White)



CW6910-451  
Obsidian / White  
/ (White)

### Product Features

- Body: 82% Cotton/18% Polyester. Pocket bags: 100% Polyester.
- Fleece fabric feels soft and warm.
- Drawcord waistband lets you adjust the fit.
- Zippered pockets secure your everyday essentials.
- Loose fit for a roomy feel.



**NEW** Team Club 20 Short (Youth)

RRP £21.50

**Lifecycle**

January 2021 - December 2023

**Available in**

XS - S - M - L  
XL

RRP £21.50

RRP £24.95



CW6932-010  
Black / White /  
(White)



CW6932-063  
Dark Grey  
Heather / Black /  
(Black)



CW6932-071  
Charcoal  
Heather / White /  
(White)



CW6932-451  
Obsidian / White  
/ (White)

**Product Features**

- Body: 82% Cotton/18% Polyester. Pocket bags: 100% Polyester.
- Fleece fabric feels soft and warm.
- Drawcord waistband lets you adjust the fit.
- Zippered pockets secure your everyday essentials.
- Standard fit for a relaxed, easy feel.





## **NEW** Team Club 20 Pant

**RRP £37.95**

### **Lifecycle**

January 2021 - December 2023

### **Available in**

S - M - L - XL - 2XL



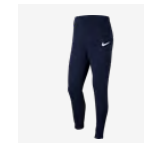
CW6907-010  
Black / White /  
(White)



CW6907-063  
Dark Grey  
Heather / Black /  
(Black)



CW6907-071  
Charcoal  
Heather / White /  
(White)



CW6907-451  
Obsidian / White  
/ (White)

### **Product Features**

- Body: 82% Cotton/18% Polyester. Pocket bags: 100% Polyester.
- Standard fit for a relaxed, easy feel.
- Elastic waistband.
- Zippered pockets.
- Cuffed ankles.



## **NEW** Team Club 20 Pant (Youth)

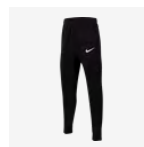
**RRP £29.95**

### **Lifecycle**

January 2021 - December 2023

### **Available in**

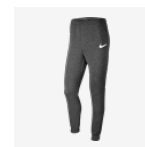
XS - S - M - L  
XL

**RRP £29.95**
**RRP £34.95**


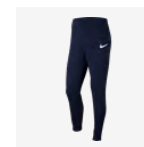
CW6909-010  
Black / White /  
(White)



CW6909-063  
Dark Grey  
Heather / Black /  
(Black)



CW6909-071  
Charcoal  
Heather / White /  
(White)



CW6909-451  
Obsidian / White  
/ (White)

### **Product Features**

- Body: 82% Cotton/18% Polyester. Pocket bags: 100% Polyester.
- Fleece fabric feels soft and warm.
- Drawcord waistband lets you adjust the fit.
- Zippered pockets secure your everyday essentials.
- Standard fit for a relaxed, easy feel.



## **NEW** Women's Team Club 20 Tee

RRP £17.95

### Lifecycle

January 2021 - December 2023

### Available in

XS - S - M - L - XL


CZ0903-010  
Black / (White)

CZ0903-071  
Charcoal  
Heather / (White)

CZ0903-100  
White / (Black)

CZ0903-302  
Pine Green /  
(White)

CZ0903-451  
Obsidian /  
(White)

CZ0903-463  
Royal Blue /  
(White)

CZ0903-657  
University Red /  
(White)

CZ0903-719  
Tour Yellow /  
(Black)

### Product Features

- 100% Cotton.
- Standard fit for a relaxed, easy feel.
- Ribbed collar.



**NEW** Women's Team Club 20 Tee

RRP £24.95

**Lifecycle**

January 2021 - December 2023

**Available in**

XS - S - M - L - XL



CW6967-010  
Black / (White)



CW6967-100  
White / (Black)



CW6967-451  
Obsidian /  
(White)



CW6967-657  
University Red /  
(White)

**Product Features**

- 75% Polyester/13% Cotton/12% Rayon.
- Dri-FIT technology helps you stay dry and comfortable.
- Lightweight fabric feels soft and slightly stretchy.
- Standard fit for a relaxed, easy feel.



## **NEW** Women's Team Club 20 Hoodie

RRP £39.95

### Lifecycle

January 2021 - December 2023

### Available in

XS - S - M - L - XL



CW6957-010  
Black / White /  
(White)



CW6957-071  
Charcoal  
Heather / White /  
(White)



CW6957-101  
White / White /  
(Wolf Grey)



CW6957-302  
Pine Green /  
White / (White)



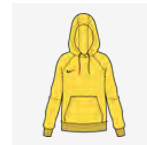
CW6957-451  
Obsidian / White  
/ (White)



CW6957-463  
Royal Blue /  
White / (White)



CW6957-657  
University Red /  
White / (White)



CW6957-719  
Tour Yellow /  
Black / (Black)

### Product Features

- Body: 80% Cotton/20% Polyester. Hood lining: 100% Cotton.
- Fleece fabric feels soft and warm.
- Ribbed cuffs and hem help hold the hoodie in place.
- Drawcord hood lets you adjust the fit.
- Standard fit for a relaxed, easy feel.
- Raglan sleeves.
- Front pocket.





**NEW** Women's Team Club 20  
Full-Zip Hoodie

RRP £42.95

**Lifecycle**

January 2021 - December 2023

**Available in**

XS - S - M - L - XL



CW6955-010  
Black / White /  
(White)



CW6955-063  
Dark Grey  
Heather / Black /  
(Black)



CW6955-071  
Charcoal  
Heather / White /  
(White)



CW6955-451  
Obsidian / White  
/ (White)



CW6955-657  
University Red /  
White / (White)

**Product Features**

- Body: 80% Cotton/20% Polyester. Hood lining: 100% Cotton.
- Fleece fabric feels soft and warm.
- Large hood with drawcord lets you wear the hood loose or cinch out the cold.
- Standard fit for a relaxed, easy feel.
- Side pockets.



**NEW** Women's Team Club 20  
Short

RRP £29.95

**Lifecycle**

January 2021 - December 2023

**Available in**

XS - S - M - L - XL


CW6963-010  
Black / White /  
(White)

CW6963-063  
Dark Grey  
Heather / Black /  
(Black)

CW6963-071  
Charcoal  
Heather / White /  
(White)

CW6963-451  
Obsidian / White  
/ (White)

**Product Features**

- Body: 82% Cotton/18% Polyester. Pocket bags: 100% Polyester.
- Fleece fabric feels soft and warm.
- Drawcord waistband lets you adjust the fit.
- Zippered pockets secure your everyday essentials.
- Loose fit for a roomy feel.



## Women's Team Club 20 Pant

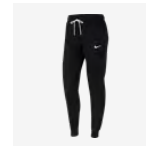
RRP £37.95

### Lifecycle

January 2021 - December 2023

### Available in

XS - S - M - L - XL



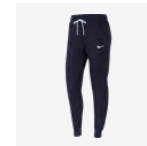
CW6961-010  
Black / White /  
(White)



CW6961-063  
Dark Grey  
Heather / Black /  
(Black)



CW6961-071  
Charcoal  
Heather / White /  
(White)



CW6961-451  
Obsidian / White  
/ (White)

### Product Features

- Body: 80% Cotton/20% Polyester. Pocket bags: 100% Cotton.
- Fleece fabric feels soft and warm.
- Drawcord waistband lets you adjust the fit.
- Zippered pockets secure your everyday essentials.
- Standard fit for a relaxed, easy feel.





**EQUIPMENT**



## **NEW** Club Elite Team Ball

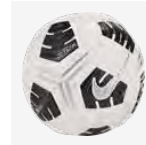
RRP £54.95

### **Lifecycle**

January 2021 - December 2022

### **Available in**

5



CU8053-100  
White / Black /  
(Metallic Silver)

### **Product Features**

- 40% Rubber/40% Synthetic Leather/15% Synthetic/5% Cotton.
- Nike Aerowsculpt technology uses molded grooves for more consistent flight.
- Textured casing gives you great touch and feel.
- Rubber bladder helps maintain air pressure and shape.
- 12-panel design.





## **NEW** Academy Pro Fifa Size 4 Ball

RRP £31.95

### **Lifecycle**

January 2021 - December 2022

### **Available in**

4



CU8041-100  
White / Black /  
(Volt)



CU8041-101  
White / Black /  
(Total Orange)

### **Product Features**

- 60% Rubber/15% Polyurethane/13% Polyester/12% EVA.
- Nike Aerowsculpt technology uses molded grooves for more consistent flight.
- Rubber bladder helps maintain air pressure and shape.
- High-contrast graphics help you easily track the ball.
- Size 4.



**NEW** Academy Pro Fifa Size 5 Ball

RRP £31.95

**Lifecycle**

January 2021 - December 2022

**Available in**

5



CU8038-100  
White / Black /  
(Volt)



CU8038-101  
White / Black /  
(Total Orange)

**Product Features**

- 60% Rubber/15% Polyurethane/13% Polyester/12% EVA.
- Nike Aerowsculpt technology uses molded grooves for more consistent flight.
- Rubber bladder helps maintain air pressure and shape.
- High-contrast graphics help you easily track the ball.
- Size 5.



## **NEW** Futsal Pro Team Ball

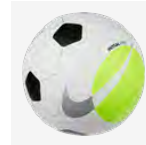
RRP £31.95

### **Lifecycle**

January 2021 - December 2022

### **Available in**

PRO



DH1992-100  
White / Volt /  
(Silver)

### **Product Features**

- 60% Rubber/15% Polyurethane/13% Polyester/12% EVA.
- Textured surface gives you great touch and feel.
- Hand-sewn construction means tighter seams for durability.
- High-contrast graphics help you easily track the ball.
- Official Futsal size and weight.



## **NEW** Strike Team 290g Ball

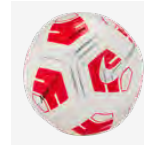
RRP £19.95

### **Lifecycle**

January 2021 - December 2022

### **Available in**

4 - 5



CU8062-100  
White / Bright  
Crimson / (Silver)

### **Product Features**

- 60% Rubber/15% Polyurethane/13% Polyester/12% EVA.
- Reduced weight makes it more suitable for young athletes.
- Nike Aerowsculpt technology uses molded grooves for more consistent flight.
- High-contrast graphics help you easily track the ball.
- Machine-stitched casing enhances durability.
- Reinforced rubber bladder for optimal air and shape retention.
- 12-panel design.



## **NEW** Strike Team 350g Ball

RRP £19.95

### **Lifecycle**

January 2021 - December 2022

### **Available in**

3 - 4 - 5



CU8064-100  
White / Blue /  
(Black)

### **Product Features**

- 60% Rubber/15% Polyurethane/13% Polyester/12% EVA.
- Reduced weight makes it more suitable for young athletes.
- Nike Aerowsculpt technology uses molded grooves for more consistent flight.
- High-contrast graphics help you easily track the ball.
- Machine-stitched casing enhances durability.
- Reinforced rubber bladder for optimal air and shape retention.
- 12-panel design.





## **NEW** Academy Team IMS Ball

RRP £19.95

### Lifecycle

January 2021 - December 2022

### Available in

3 - 4 - 5



CU8047-100  
White / Black /  
(Volt)



CU8047-101  
White / Black /  
(Total Orange)



CU8047-102  
White / Black /  
(Light Blue Fury)



CU8047-720  
Yellow / Violet /  
(Bright Crimson)

### Product Features

- 60% Rubber/15% Polyurethane/13% Polyester/12% EVA.
- Nike Aerowsculpt technology uses molded grooves for more consistent flight.
- Textured casing gives you great touch and feel.
- Reinforced rubber bladder helps maintain air pressure and shape.



## **NEW** Park Team Ball

RRP £15.95

### Lifecycle

January 2021 - December 2023

### Available in

3 - 4 - 5



CU8033-101  
White / Black /  
(Volt)



CU8033-310  
Rage Green /  
Black / (White)



CU8033-610  
Crimson / Black  
/ (White)



CU8033-720  
Yellow / Violet /  
(Bright Crimson)



CU8033-810  
Orange / Black /  
(White)

### Product Features

- 60% Rubber/15% Polyurethane/13% Polyester/12% EVA.
- Smooth surface has a consistent touch.
- Durable design helps maintain air pressure and shape.
- 12-panel design.



## **NEW** Pitch Team Ball

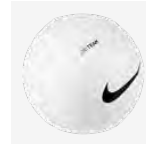
RRP £11.95

### Lifecycle

January 2021 - December 2022

### Available in

3 - 4 - 5



DH9796-100  
White / (Black)



DH9796-310  
Electric Green /  
(Black)



DH9796-410  
Blue Fury /  
(Black)



DH9796-635  
Bright Crimson /  
(Black)

### Product Features

- 60% Rubber/15% Polyurethane/13% Polyester/12% EVA.
- Smooth, durable casing has a consistent feel.
- Rubber bladder helps maintain air pressure and shape.



## Nike Club Team Ball Bag

RRP £31.95

### Lifecycle

January 2019 - December 2021

### Available in

ONE SIZE



BA5200-010  
Black / Black /  
(White)

### Product Features

- Lining: 100% Polyester. Body: 88% Polyester/12% Nylon.
- Adjustable shoulder straps are padded for comfortable carrying.
- Drawcord closure lets you quickly access your gear.
- Lightweight mesh promotes ventilation.
- 86L x 44H x 44W cm / 160L.



## **NEW** Academy Team L Hardcase

RRP £39.95

### Lifecycle

January 2021 - December 2022

### Available in

L



CU8087-010  
Black / Black /  
(White)



CU8087-410  
Midnight Navy /  
Black / (White)



CU8087-657  
University Red /  
Black / (White)

### Product Features

- 100% Polyester.
- Main body compartment offers spacious storage.
- Hard bottom helps keep items safe from bumps and scrapes.
- Zippered wet/dry compartment at the bottom keeps things clean and organized.
- Handles can attach together for an alternate carrying option.
- 64L x 31W x 30H cm/ 59L.





## **NEW** Academy Team M Hardcase

RRP £34.95

### Lifecycle

January 2021 - December 2022

### Available in

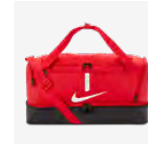
M



CU8096-010  
Black / Black /  
(White)



CU8096-410  
Midnight Navy /  
Black / (White)



CU8096-657  
University Red /  
Black / (White)

### Product Features

- 100% Polyester.
- Main body compartment offers spacious storage.
- Hard bottom helps keep items safe from bumps and scrapes.
- Zippered wet/dry compartment at the bottom keeps gear clean and organized.
- Handles can attach together for an alternate carrying option.
- 53L x 30W x 27H cm/ 37L.



## **NEW** Academy Team L Duffel Bag

RRP £31.95

### Lifecycle

January 2021 - December 2022

### Available in

L



CU8089-010  
Black / Black /  
(White)



CU8089-410  
Midnight Navy /  
Black / (White)



CU8089-657  
University Red /  
Black / (White)

### Product Features

- 100% Polyester.
- Large main compartment is spacious enough for your ball and more.
- Zippered wet/dry compartment at the bottom helps keep things clean and organized.
- Hand and shoulder straps let you carry your gear comfortably.
- Small interior pocket and zippered exterior pockets hold small valuables.
- 70L x 36W x 35H cm / 95L.



## Academy Team M Duffel Bag

RRP £26.95

### Lifecycle

January 2021 - December 2022

### Available in

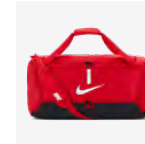
M



CU8090-010  
Black / Black /  
(White)



CU8090-410  
Midnight Navy /  
Black / (White)



CU8090-657  
University Red /  
Black / (White)

### Product Features

- 100% Polyester.
- Main compartment is spacious enough for your ball and more.
- Zippered wet/dry compartment at the bottom helps keep things clean and organized.
- Hand and shoulder straps let you carry your gear comfortably.
- Small interior pocket and zippered exterior pockets hold small valuables.
- 64L x 30W x 31H cm / 60L.



## **NEW** Academy Team S Duffel Bag

RRP £22.95

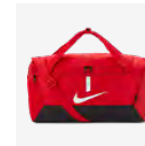
### Lifecycle

January 2021 - December 2022

### Available in

S


CU8097-010  
Black / Black /  
(White)

CU8097-410  
Midnight Navy /  
Black / (White)

CU8097-657  
University Red /  
Black / (White)

### Product Features

- 100% Polyester.
- Zippered main compartment offers spacious storage.
- Separate wet/dry compartment helps keep things clean and organized.
- Hand and shoulder straps let you carry your gear comfortably.
- Small interior pocket and zippered exterior pockets hold small valuables.
- 53L x 26W x 28H cm / 41L.





## **NEW** Academy Team Backpack

RRP £26.95

### Lifecycle

January 2021 - December 2022

### Available in

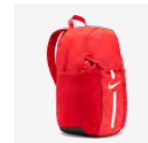
ONE SIZE



DC2647-010  
Black / Black /  
(White)



DC2647-411  
Midnight Navy /  
Black / (White)



DC2647-657  
University Red /  
Black / (White)

### Product Features

- 100% Polyester.
- Wet/dry compartment helps keep things clean and organized.
- Curved shoulder straps and back panel are padded for extra comfort.
- Back pocket features a felt interior to safely store your phone or keys.
- Mesh pocket on the side is designed to hold a water bottle.
- Dual-zippered main compartment holds all your gear.
- Front pocket is large enough to fit a soccer ball.
- 48H x 33W x 17D cm/ 30L.





**NEW** Academy Team Backpack  
(Youth)

RRP £22.95

**Lifecycle**

January 2021 - December 2022

**Available in**

ONE SIZE



DA2571-010  
Black / Black /  
(White)

**Product Features**

- 100% Polyester.
- Wet/dry compartment helps keep things clean and organized.
- Curved shoulder straps and back panel are padded for extra comfort.
- Back pocket features a felt interior to safely store your phone or keys.
- Mesh pocket on the side is designed to hold a water bottle.
- Front pocket is large enough to fit a soccer ball.
- Internal sleeve safely stores up to a 15" laptop.
- 45H x 30W x 13D cm/ 22L.



## **NEW** Academy Football Gymsack

RRP £10.95

### Lifecycle

January 2021 - December 2022

### Available in

ONE SIZE



DA5435-010  
Black / Black /  
(White)

### Product Features

- 100% Polyester.
- Woven fabric is lightweight and durable.
- Main compartment cinches closed for easy access to your gear.
- Mesh at the bottom allows ventilation.
- Zippered pouch on the front keeps your essentials within reach.
- 50H x 36W x 6D cm / 18L.



## Nike Club Team Roller Bag

RRP £84.95

### Lifecycle

January 2019 - December 2021

### Available in

ONE SIZE



BA5199-010  
Black / Black /  
(White)

### Product Features

- 100% Polyester.
- Adjustable handle and wheels for easier hauling.
- Zippered main compartment provides secure storage.
- Grab handle on the side gives an alternative carrying option.
- 82L x 35W x 38H cm /120L.



## Nike Club Team Toiletry Bag

RRP £12.95

### Lifecycle

January 2019 - December 2021

### Available in

ONE SIZE



BA5198-010  
Black / Black /  
(White)

### Product Features

- 100% Polyester.
- Zippered closure for secure storage.
- Tarpaulin bottom helps keep items dry.
- Haul loop for convenient carrying.
- 26L x 14H x 14W cm / 8L.





[niketeamfootball.com](https://niketeamfootball.com)